

It's as big as the
2024 Total Solar Eclipse

From light to dark (paint, that is) and everything
in between, it's time to stock your shelves.

THE **2024** APPLIED MSSSM ANNUAL
PAINT & CHEMICAL
P R O M O T I O N

IPC[®] • aero-tech[™] • Nu-Day[™]
HandWorks[®] • Aero-Chem[®]
FLEET-Fill[®] • Saf-Line[™]

Every Small Part Counts

We're here to manage them for you![®]

 **APPLIED**
Maintenance Supplies & Solutions[®]

INDUSTRIAL PAINTS

Welcome to the Applied Maintenance Supplies & SolutionsSM Industrial Paints, Chemicals and Accessories Brochure.

Applied Maintenance Supplies & SolutionsSM (Applied MSSSM) is a leading value-added National Distributor of C-Class Maintenance, Repair, Operating and Production (MROP) supplies specializing in fasteners, cutting tools, paints and chemicals, electrical, transportation, fluid flow, safety, janitorial and other industrial products serving customers in virtually every industry.

The company delivers shop solutions through its high quality products and Vendor Managed Inventory (VMI) service. Applied MSSSM is also able to effectively leverage the resources and benefits of being part of the Applied Industrial Technologies (NYSE: AIT) organization with locations across the United States, Puerto Rico, Canada, Mexico, Australia and New Zealand.

PRODUCT INTEGRITY IS THE CORE OF APPLIED MAINTENANCE SUPPLIES & SOLUTIONSSM

CONTENTS PAGE

Product Selection Guide	1
IPC® Assortments	2
IPC® Aerosols	3-6
IPC® Gallons & Stir Sticks.....	7
True-Grip® Anti-Slip Gallons.....	7
aero-tech™ Aerosols.....	8-9
aero-tech™ Inverted Tip Markers	9
aero-tech™ Mix & Match Inverted Tip Marking Paint Assortment....	9
aero-tech™ Traffic Markers	10
Marking Paint Accessories.....	10
Nu-Day™ Aerosols.....	11
Paint Markers.....	12
Paint Accessories, Tape, Brushes, Scrapers etc.	13-14
Safety Glasses, SAF-LINE™ and Starlite®	15
SAF-LINE™ Gloves, Respirators, Coveralls and Shoe Covers.....	15-16
Wipes, Sponges and Rags.....	17
Handworks® Hand Cleaners & Dispensers	18-19
Cleaners, Degreasers & Removers.....	19-20
Coatings, Protectants & Sealants	20
Grease & Lubricants.....	21-22
Fleet & Automotive Cleaners and Protectants	23
Fleet & Automotive Bulk Industrial Grade Cleaners.....	24
Fleet & Automotive Cleaning Accessories.....	25
Rhino Dirt™ Absorbents	26



Aerosols

Gallons

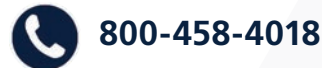


Accessories & Cleaners

HOW TO ORDER:

By Phone:

Customer Service
Open Monday through Friday,
8:00 a.m.-5:00 p.m. EST



A Variety of Payment Options:

Orders are taken on open account
and Credit Card (American Express,
Master Card, VISA)



By Website:

www.Appliedmss.com

By Fax:

24 hours a day, 7 days a week
1-866-802-2739

Corporate Headquarters:

14790 Foltz Parkway
Strongsville, Ohio 44149



When you see this symbol,
you know the paint is American made!

APPLIED MAINTENANCE SUPPLIES & SOLUTIONS®

		Nu-Day™ General Use Enamel Paint	aero-tech™ General Purpose Enamel Paint	IPC® Industrial Protective Coatings
Durable		X	X	X
Dries Fast		X	X	
Rust Resistant		X	X	X
Gas/Oil Resistant			X	X
Abrasion Resistant				X
Higher Solids			X	X
Highest Solids				X
Does not contain lead, CFC's chromates or chlorinated solvents		X	X	X



Features & Benefits:

- Heat resistant up to 250°F (121°C) dry heat
- Indoor and outdoor use
- 16 oz. can, 12 oz. net wt. (340 g)
- Dry time*: To touch 5 minutes, to recoat 30 minutes, *at 72°F (22°C), 50% humidity, 1.5 mil thickness
- Covers up to 15 square feet

Applications:

- Use on metal, wood, wicker and most plastics

Suggested Uses:

- Desks, tables, filing cabinets, gardening equipment etc.
- Rusted metal surfaces should be wire brushed and primed

Features & Benefits:

- Heat resistant up to 300°F (148°C) dry heat
- Resists fading
- Indoor and outdoor use
- 16 oz. can, 12 oz. net wt. (340 g)
- Dry time*: To touch 5 minutes, tack free 30 minutes, to recoat before 1 hour or after 48 hours, *at 72°F (22°C), 50% humidity, 1.5 mil thickness
- Covers up to 15 square feet

Applications:

- Use on metal, wood, wicker and most plastics

Suggested Uses:

- Industrial, automotive and construction
- Rusted metal surfaces should be wire brushed and primed

Features & Benefits:

- Heat resistant up to 300°F (148°C) dry heat
- Resistant to ultraviolet sun rays
- Indoor and outdoor use
- 20 oz. can, 16 oz. net wt. (454 g)
- Dry time*: To touch 10 minutes, tack free 30 minutes, to recoat before 1 hour or after 48 hours, *at 72°F (22°C), 50% humidity, 1.5 mil thickness
- Covers up to 18 square feet

Applications:

- Use on metal and wood, can be applied to bare metal

Suggested Uses:

- Industrial, marine*, automotive and construction *Not recommended for continuous immersion
- Benches, lift trucks, machinery, racks, doors, gas meters, bins, motors, tools, tanks, drums and piping

DISCLAIMER: The above content is provided by the supplier. Applied® does not guarantee the accuracy or timeliness of the content. The above content is provided "AS IS", AND ANY AND ALL EXPRESS AND IMPLIED WARRANTIES OF MERCHANTABILITY AND FITNESS ARE HEREBY EXCLUDED. All warranties, if any, are solely from the supplier.



114480574

PART #	LEGACY #	DESCRIPTION	QTY.
110498571	PA7942	IPC® Mix & Match Paint Assortment Choose any combination of 4 colors/4 cases (48 cans) W/110488604 (B01065) Cabinet or 114480574 (B01114) Cabinet	1

PART #	LEGACY #	DESCRIPTION	QTY.
102679367	101367	IPC® Mix & Match Aerosol Assortment Choose any 6 cans of IPC® paint w/110488606 (B01068) Aerosol Can Rack	1

PART #	LEGACY #	DESCRIPTION	QTY.
116698411	A00124	IPC® Mix & Match Pallet Assortment Choose any combination of (8) colors in increments of 60 cans per color. 40 cases (480 cans)	1



110488606

PART #	LEGACY #	DESCRIPTION	QTY.
110488606	B01068	Six-Can Aerosol Rack	1



110488604

Wall Mountable Aerosol Cabinet

- Wall mountable with fixed shelves, holds 88 cans
- Pockets on the inside door to store SDS
- Pre-installed lock and 2 keys included

PART #	LEGACY #	DESCRIPTION	QTY.
110488604	B01065	Aerosol Cabinet	1

Aerosol Cabinet

- 2 sliding shelves
- Each sliding shelf holds up to 24 cans
- Pre-installed lock and 2 keys included

PART #	LEGACY #	DESCRIPTION	QTY.
114480574	B01114	Aerosol Cabinet	1

WARNING: Certain products can expose you to chemicals which are known to the State of California to cause cancer and birth defects or reproductive harm. For more information go to: www.P65Warnings.ca.gov.

Please see on-product warning for specific information.

Applied Maintenance Supplies & SolutionsSM sells products for **INDUSTRIAL** or **COMMERCIAL** use only.



IPC® Aerosol Rust and Converter Primer

- 12 oz. net weight (340 g)
- Alkyd

PART #	LEGACY #	COLOR	QTY.
116679414	402287	Black	1
116679417	402287-12	Black	12

WARNING: This product can expose you to chemicals including [Methyl Isobutyl Ketone], which is [are] known to the State of California to cause cancer and birth defects or other reproductive harm. For more information go to www.P65Warnings.ca.gov.

IPC® Aerosol Universal Sandable Primer

- 17 oz. net weight (482 g)
- Universal lacquer

PART #	LEGACY #	COLOR	QTY.
110459270	PA85693	Red Iron Oxide	1
116757855	PA85693-6	Red Iron Oxide	6
116757846	PA85693-12	Red Iron Oxide	12
116757850	PA85693-24	Red Iron Oxide	24

WARNING: This product can expose you to chemicals including [methyl Isobutyl Ketone, Titanium Dioxide], which is [are] known to the State of California to cause cancer and birth defects or other reproductive harm. For more information go to www.P65Warnings.ca.gov.

IPC® Aerosol Universal Sandable Primer

- 17 oz. net weight (482 g)
- Universal lacquer

PART #	LEGACY #	COLOR	QTY.
106253462	PA85694	Light Gray Oxide	1
116757870	PA85694-6	Light Gray Oxide	6
116757860	PA85694-12	Light Gray Oxide	12
116757865	PA85694-24	Light Gray Oxide	24

WARNING: This product can expose you to chemicals including [Titanium Dioxide], which is [are] known to the State of California to cause cancer. For more information go to www.P65Warnings.ca.gov.

IPC® Aerosol Self Etching/Weld Thru Primer

- 15 oz. net weight (425 g)
- Nitrocellulose lacquer

PART #	LEGACY #	COLOR	QTY.
106257200	PA89337	Gray	1
110357519	PA89337-12	Gray	12

WARNING: This product can expose you to chemicals including [Titanium Dioxide], which is [are] known to the State of California to cause cancer. For more information go to www.P65Warnings.ca.gov.

IPC® Aerosol Filler Primer

- 16 oz. net weight (454 g)
- Nitrocellulose lacquer

PART #	LEGACY #	COLOR	QTY.
106262978	PA89338	Gray	1
116759979	PA89338-12	Gray	12

WARNING: This product can expose you to chemicals including [Titanium Dioxide], which is [are] known to the State of California to cause cancer. For more information go to www.P65Warnings.ca.gov.

IPC® Aerosol Self Etching/Sandable Primer

- 15 oz. net weight (425 g)
- Nitrocellulose lacquer

PART #	LEGACY #	COLOR	QTY.
106257483	PA89334	Light Gray	1
116759965	PA89334-12	Light Gray	12

WARNING: This product can expose you to chemicals including [Titanium Dioxide], which is [are] known to the State of California to cause cancer. For more information go to www.P65Warnings.ca.gov.

IPC® Aerosol Self Etching/Sandable Primer

- 15 oz. net weight (425 g)
- Nitrocellulose lacquer

PART #	LEGACY #	COLOR	QTY.
106300401	PA89335	Black	1
116759970	PA89335-12	Black	12

WARNING: This product can expose you to chemicals including [Carbon Black], which is [are] known to the State of California to cause cancer. For more information go to www.P65Warnings.ca.gov.

IPC® Aerosol Self Etching/Sandable Primer

- 15 oz. net weight (425 g)
- Nitrocellulose lacquer

PART #	LEGACY #	COLOR	QTY.
106266424	PA89336	Red Iron Oxide	1
116759975	PA89336-12	Red Iron Oxide	12

WARNING: This product can expose you to chemicals including [Ethyl Benzene], which is [are] known to the State of California to cause cancer. For more information go to www.P65Warnings.ca.gov.

IPC® Aerosol Cold Galvanizing

- 16 oz. net weight (454 g)
- Epoxy

PART #	LEGACY #	COLOR	QTY.
106269257	PA85695	Gray	1
116757885	PA85695-12	Gray	12

WARNING: This product can expose you to chemicals including [Toluene], which is [are] known to the State of California to cause birth defects or other reproductive harm. For more information go to www.P65Warnings.ca.gov.

IPC® Aerosol Shiny Galvanizing

- 16 oz. net weight (454 g)
- Lacquer (acrylic)

PART #	LEGACY #	COLOR	QTY.
106298405	PA89186	Gray	1
110357502	PA89186-12	Gray	12

WARNING: This product can expose you to chemicals including [Toluene], which is [are] known to the State of California to cause birth defects or other reproductive harm. For more information go to www.P65Warnings.ca.gov.

IPC® Universal & Specially Matched Aerosol White, Ivory, Cream

- 16 oz. net weight (454 g)
- Enamel

PART #	LEGACY #	COLOR	QTY.
106290001	PA85683	Gloss White	1
116757769	PA85683-6	Gloss White	6
116757759	PA85683-12	Gloss White	12
116757764	PA85683-24	Gloss White	24
110357133	PA85683-480	Gloss White	480
106251318	PA86501	Flat White	1
116758489	PA86501-12	Flat White	12
116758495	PA86501-24	Flat White	24
106290747	PA86246	Non-Conductive Power Bone	1
116758395	PA86246-12	Non-Conductive Power Bone	12
106270139	PA86507	Automobile White	1
110357225	PA86507-12	Automobile White	12
106300818	PA86857	Non-Conductive Boom White	1
110357251	PA86857-12	Non-Conductive Boom White	12
106271160	PA88900	BCT White	1
110357458	PA88900-12	BCT White	12
116692266	407851	AC/LBH White	1
116692270	407851-12	AC/LBH White	12
106251048	PA86602	ASH Ivory	1
116758593	PA86602-12	ASH Ivory	12
106264402	PA87099	Lift Equipment Cream	1
116758787	PA87099-12	Lift Equipment Cream	12

WARNING: This product can expose you to chemicals including [Methyl Isobutyl Ketone, Titanium Dioxide], which is [are] known to the State of California to cause cancer and birth defects or other reproductive harm. For more information go to www.P65Warnings.ca.gov.

IPC® Universal & Specially Matched Aerosol Clear

- 16 oz. net weight (454 g)
- Lacquer (acrylic)

PART #	LEGACY #	COLOR	QTY.
106295251	PA87162	Gloss Acrylic Clear	1
116758842	PA87162-6	Gloss Acrylic Clear	6
116758835	PA87162-12	Gloss Acrylic Clear	12

WARNING: This product can expose you to chemicals including [Ethyl Benzene], which is [are] known to the State of California to cause cancer. For more information go to www.P65Warnings.ca.gov.

RUST RESISTANT. FORMULATED TO PREVENT CORROSION.



IPC® Universal & Specially Matched Aerosol Black

- 16 oz. net weight (454 g)
- Enamel

PART #	LEGACY #	COLOR	QTY.
110459282	PA85684	Gloss Black	1
116757785	PA85684-6	Gloss Black	6
116757775	PA85684-12	Gloss Black	12
116757780	PA85684-24	Gloss Black	24
110357136	PA85684-480	Gloss Black	480

⚠ WARNING: This product can expose you to chemicals including [Methyl Isobutyl Ketone], which is [are] known to the State of California to cause cancer and birth defects or other reproductive harm. For more information go to www.P65Warnings.ca.gov.

PART #	LEGACY #	COLOR	QTY.
106281375	PA86499	Semi-Gloss Black	1
116758479	PA86499-12	Semi-Gloss Black	12

⚠ WARNING: This product can expose you to chemicals including [Carbon Black, Ethyl Benzene], which is [are] known to the State of California to cause cancer. For more information go to www.P65Warnings.ca.gov.

PART #	LEGACY #	COLOR	QTY.
106292364	PA85692	Flat Black	1
116757840	PA85692-6	Flat Black	6
110491728	PA85692-12	Flat Black	12
116757836	PA85692-24	Flat Black	24

⚠ WARNING: This product can expose you to chemicals including [Methyl Isobutyl Ketone], which is [are] known to the State of California to cause cancer and birth defects or other reproductive harm. For more information go to www.P65Warnings.ca.gov.

- 16 oz. net weight (454 g)
- Lacquer (acrylic)

PART #	LEGACY #	COLOR	QTY.
106267274	PA87520	Gloss Black	1
116759014	PA87520-12	Gloss Black	12

⚠ WARNING: This product can expose you to chemicals including [Toluene], which is [are] known to the State of California to cause birth defects or other reproductive harm. For more information go to www.P65Warnings.ca.gov.

IPC® Universal & Specially Matched Aerosol Gray

- 16 oz. net weight (454 g)
- Enamel

PART #	LEGACY #	COLOR	QTY.
106517565	PA85685	Gloss Dark Machinery Gray	1
116757794	PA85685-6	Gloss Dark Machinery Gray	6
116757790	PA85685-12	Gloss Dark Machinery Gray	12
106501932	PA85686	Gloss Light Machinery Gray	1
116757803	PA85686-6	Gloss Light Machinery Gray	6
116757798	PA85686-12	Gloss Light Machinery Gray	12
106289530	PA85734	KRG Gray	1
110357155	PA85734-12	KRG Gray	12
106260827	PA86783	Dove Gray	1
116758713	PA86783-12	Dove Gray	12
106286043	PA86794	Agriculture Equipment Gray	1
116758717	PA86794-12	Agriculture Equipment Gray	12
106296055	PA86564	TRN Gray	1
110357228	PA86564-12	TRN Gray	12
106246213	PA87149	TYT Forklift Gray	1
116758815	PA87149-12	TYT Forklift Gray	12
110357285	PA87149-24	TYT Forklift Gray	24
106281035	PA88299	BCT Gray	1
110357394	PA88299-12	BCT Gray	12
116692219	407843	AC/GMC Dark Gray	1
116692222	407843-12	AC/GMC Dark Gray	12

⚠ WARNING: This product can expose you to chemicals including [Methyl Isobutyl Ketone, Titanium Dioxide], which is [are] known to the State of California to cause cancer and birth defects or other reproductive harm. For more information go to www.P65Warnings.ca.gov.

PART #	LEGACY #	COLOR	QTY.
106261418	PA87138	Semi-Truck Gray	1
110357279	PA87138-12	Semi-Truck Gray	12

⚠ WARNING: This product can expose you to chemicals including [Titanium Dioxide, Toluene], which is [are] known to the State of California to cause cancer and birth defects or other reproductive harm. For more information go to www.P65Warnings.ca.gov.

IPC® Universal & Specially Matched Aerosol Gray (Continued)

- 16 oz. net weight (454 g)
- Enamel

PART #	LEGACY #	COLOR	QTY.
106281807	PA87166	GNL Gray Semi-Gloss	1
116758847	PA87166-12	GNL Gray Semi-Gloss	12
106260449	PA88657	Ample Light Gray	1
110357427	PA88657-12	Ample Light Gray	12
106270603	PA89152	VLV Gray	1
110357498	PA89152-12	VLV Gray	12

⚠ WARNING: This product can expose you to chemicals including [Titanium Dioxide], which is [are] known to the State of California to cause cancer. For more information go to www.P65Warnings.ca.gov.

PART #	LEGACY #	COLOR	QTY.
106274098	PA87842	NSN Dark Gray	1
110357365	PA87842-12	NSN Dark Gray	12

⚠ WARNING: This product can expose you to chemicals including [Methyl Isobutyl Ketone, Toluene], which is [are] known to the State of California to cause cancer and birth defects or other reproductive harm. For more information go to www.P65Warnings.ca.gov.

PART #	LEGACY #	COLOR	QTY.
106285478	PA89355	UNV Well Gray	1
110357539	PA89355-12	UNV Well Gray	12

⚠ WARNING: This product can expose you to chemicals including [Carbon Black, Ethyl Benzene], which is [are] known to the State of California to cause cancer. For more information go to www.P65Warnings.ca.gov.

IPC® Universal & Specially Matched Aerosol Aluminum

- 16 oz. net weight (454 g)
- Lacquer (acrylic)

PART #	LEGACY #	COLOR	QTY.
106252939	PA85682	Aluminum	1
110742810	PA85682-6	Aluminum	6
116757754	PA85682-12	Aluminum	12
110357131	PA85682-24	Aluminum	24

⚠ WARNING: This product can expose you to chemicals including [Toluene], which is [are] known to the State of California to cause birth defects or other reproductive harm. For more information go to www.P65Warnings.ca.gov.

IPC® Universal & Specially Matched Aerosol Silver

- 16 oz. net weight (454 g)
- Enamel

PART #	LEGACY #	COLOR	QTY.
106293776	PA86437	DTR DSL Silver	1
116758427	PA86437-12	DTR DSL Silver	12

⚠ WARNING: This product can expose you to chemicals including [Toluene], which is [are] known to the State of California to cause birth defects or other reproductive harm. For more information go to www.P65Warnings.ca.gov.

PART #	LEGACY #	COLOR	QTY.
106264497	PA88538	Light Silver	1
116759562	PA88538-12	Light Silver	12

⚠ WARNING: This product can expose you to chemicals including [Methyl Isobutyl Ketone], which is [are] known to the State of California to cause cancer and birth defects or other reproductive harm. For more information go to www.P65Warnings.ca.gov.



IPC® Universal & Specially Matched Aerosol Gold

- 16 oz. net weight (454 g)
- Enamel

PART #	LEGACY #	COLOR	QTY.
106287254	PA87096	Semi-Truck Gold	1
110357273	PA87096-12	Semi-Truck Gold	12

⚠ WARNING: This product can expose you to chemicals including [Toluene], which is [are] known to the State of California to cause birth defects or other reproductive harm. For more information go to www.P65Warnings.ca.gov.

IPC® Universal & Specially Matched Aerosol Beige, Tan & Brown

- 16 oz. net weight (454 g)
- Enamel

PART #	LEGACY #	COLOR	QTY.
106278976	PA86500	CMN Beige	1
110742825	PA86500-6	CMN Beige	6
110357217	PA86500-12	CMN Beige	12
106280563	PA88350	ING Beige	1
116759386	PA88350-12	ING Beige	12

⚠ WARNING: This product can expose you to chemicals including [Titanium Dioxide], which is [are] known to the State of California to cause cancer. For more information go to www.P65Warnings.ca.gov.

PART #	LEGACY #	COLOR	QTY.
110475463	PA86853	PWR Tan	1
112101177	PA86853-12	PWR Tan	12

⚠ WARNING: This product can expose you to chemicals including [Methyl Isobutyl Ketone, Titanium Dioxide], which is [are] known to the State of California to cause cancer and birth defects or other reproductive harm. For more information go to www.P65Warnings.ca.gov.

PART #	LEGACY #	COLOR	QTY.
106266182	PA86142	Gloss Equipment Brown	1
110357189	PA86142-12	Gloss Equipment Brown	12

⚠ WARNING: This product can expose you to chemicals including [Titanium Dioxide, Carbon Black, Methyl Isobutyl Ketone, Ethyl Benzene], which is [are] known to the State of California to cause cancer and birth defects or other reproductive harm. For more information go to www.P65Warnings.ca.gov.

IPC® Universal & Specially Matched Aerosol Yellow

- 16 oz. net weight (454 g)
- Enamel

PART #	LEGACY #	COLOR	QTY.
106267413	PA85687	Gloss Yellow	1
116757808	PA85687-12	Gloss Yellow	12
106259984	PA86476	Safety Yellow	1
116758446	PA86476-6	Safety Yellow	6
110656181	PA86476-12	Safety Yellow	12
110459283	PA86504	New Equipment Yellow	1
110742827	PA86504-6	New Equipment Yellow	6
116758506	PA86504-12	New Equipment Yellow	12
106260257	PA86751	School Bus Yellow	1
110742828	PA86751-6	School Bus Yellow	6
110357236	PA86751-12	School Bus Yellow	12
106288212	PA86856	VMR Yellow	1
110357250	PA86856-12	VMR Yellow	12
106292369	PA87235	GRV Yellow	1
110357308	PA87235-12	GRV Yellow	12
106289307	PA88527	KMT Yellow	1
110357419	PA88527-12	KMT Yellow	12
106254235	PA89138	HYS Nugget Yellow	1
110357493	PA89138-12	HYS Nugget Yellow	12

⚠ WARNING: This product can expose you to chemicals including [Methyl Isobutyl Ketone, Titanium Dioxide], which is [are] known to the State of California to cause cancer and birth defects or other reproductive harm. For more information go to www.P65Warnings.ca.gov.

IPC® Universal & Specially Matched Aerosol Orange

- 16 oz. net weight (454 g)
- Enamel

PART #	LEGACY #	COLOR	QTY.
106515207	PA85689	Gloss Equipment Orange	1
116757823	PA85689-12	Gloss Equipment Orange	12
106281735	PA86478	Safety Orange	1
116758460	PA86478-6	Safety Orange	6
116758457	PA86478-12	Safety Orange	12
106290531	PA86750	OMH Orange	1
116758692	PA86750-12	OMH Orange	12
106274854	PA86789	DTW Orange	1
110357244	PA86789-12	DTW Orange	12
106290059	PA87156	SKJ Orange	1
116758825	PA87156-12	SKJ Orange	12
106254748	PA88671	KBT Orange	1
116759592	PA88671-12	KBT Orange	12
106299492	PA88862	HTC Orange	1
116759699	PA88862-12	HTC Orange	12

⚠ WARNING: This product can expose you to chemicals including [Titanium Dioxide, Carbon Black, Methyl Isobutyl Ketone, Ethyl Benzene], which is [are] known to the State of California to cause cancer and birth defects or other reproductive harm. For more information go to www.P65Warnings.ca.gov.

PART #	LEGACY #	COLOR	QTY.
106260809	PA86502	Farm & Implement Yellow	1
110357219	PA86502-12	Farm & Implement Yellow	12

⚠ WARNING: This product can expose you to chemicals including [titanium dioxide, carbon black, methyl isobutyl ketone, ethyl benzene], which is [are] known to the State of California to cause cancer and birth defects or other reproductive harm. For more information go to www.P65Warnings.ca.gov.

PART #	LEGACY #	COLOR	QTY.
106279091	PA87125	Forklift Yellow	1
110357278	PA87125-12	Forklift Yellow	12
106245129	PA87413	New Farm & Implement Industrial Yellow	1
116758914	PA87413-12	New Farm & Implement Industrial Yellow	12
106288882	PA88482	KBL Yellow	1
110357407	PA88482-12	KBL Yellow	12
106276147	PA88510	VLV Yellow	1
110357414	PA88510-12	VLV Yellow	12

⚠ WARNING: This product can expose you to chemicals including [Titanium Dioxide], which is [are] known to the State of California to cause cancer. For more information go to www.P65Warnings.ca.gov.

PART #	LEGACY #	COLOR	QTY.
106288017	PA87100	Lift Equipment Orange	1
116758795	PA87100-12	Lift Equipment Orange	12
106274203	PA87150	TYT Forklift Orange	1
116758820	PA87150-12	TYT Forklift Orange	12
110357289	PA87150-24	TYT Forklift Orange	24

⚠ WARNING: This product can expose you to chemicals including [Methyl Isobutyl Ketone, Titanium Dioxide], which is [are] known to the State of California to cause cancer and birth defects or other reproductive harm. For more information go to www.P65Warnings.ca.gov.

PART #	LEGACY #	COLOR	QTY.
106261067	PA88072	New Lift Equipment Orange	1
110357385	PA88072-12	New Lift Equipment Orange	12

⚠ WARNING: This product can expose you to chemicals including [Titanium Dioxide], which is [are] known to the State of California to cause cancer. For more information go to www.P65Warnings.ca.gov.



IPC® Universal & Specially Matched Aerosol Red

- 16 oz. net weight (454 g)
- Enamel

PART #	LEGACY #	COLOR	QTY.
106255228	PA85688	Gloss Red	1
116757818	PA85688-6	Gloss Red	6
116757813	PA85688-12	Gloss Red	12
106278022	PA86480	Cola Red	1
116758464	PA86480-12	Cola Red	12
106273657	PA86859	PWR Red	1
116758733	PA86859-12	PWR Red	12
106258755	PA87494	New Cola Red	1
116758971	PA87494-12	New Cola Red	12
106242241	PA87522	Agriculture Equipment Red	1
116759019	PA87522-12	Agriculture Equipment Red	12
106290657	PA88628	New Soda Red	1
110357426	PA88628-12	New Soda Red	12
110498540	PA89196	DWS Red	1
116759899	PA89196-12	DWS Red	12
116692207	407841	AC/MNT Red	1
116692209	407841-12	AC/MNT Red	12
116692280	407853	AC/LIC Red	1
116692283	407853-12	AC/LIC Red	12

WARNING: This product can expose you to chemicals including [Titanium Dioxide, Carbon Black, Methyl Isobutyl Ketone, Ethyl Benzene], which is [are] known to the State of California to cause cancer and birth defects or other reproductive harm. For more information go to www.P65Warnings.ca.gov.

IPC® Universal & Specially Matched Aerosol Safety Colors

- 16 oz. net weight (454 g)
- Enamel

PART #	LEGACY #	COLOR	QTY.
106259984	PA86476	Safety Yellow	1
116758446	PA86476-6	Safety Yellow	6
110656181	PA86476-12	Safety Yellow	12
106268773	PA86477	Safety Blue	1
116758451	PA86477-6	Safety Blue	6
110357210	PA86477-12	Safety Blue	12

PART #	LEGACY #	COLOR	QTY.
106255228	PA85688	Gloss Safety Red	1
116757818	PA85688-6	Gloss Safety Red	6
116757813	PA85688-12	Gloss Safety Red	12
106281735	PA86478	Safety Orange	1
116758460	PA86478-6	Safety Orange	6
116758457	PA86478-12	Safety Orange	12
110742843	PA92999	Safety Green	1
110742845	PA92999-6	Safety Green	6
116761576	PA92999-12	Safety Green	12

WARNING: This product can expose you to chemicals including [Titanium Dioxide, Carbon Black, Methyl Isobutyl Ketone, Ethyl Benzene], which is [are] known to the State of California to cause cancer and birth defects or other reproductive harm. For more information go to www.P65Warnings.ca.gov.

IPC® Universal & Specially Matched Aerosol Blue

- 16 oz. net weight (454 g)
- Enamel

PART #	LEGACY #	COLOR	QTY.
106271057	PA85691	Gloss Blue	1
116757833	PA85691-12	Gloss Blue	12
106268773	PA86477	Safety Blue	1
116758451	PA86477-6	Safety Blue	6
110357210	PA86477-12	Safety Blue	12
106272362	PA86506	Refuse Blue	1
116758509	PA86506-12	Refuse Blue	12
106249232	PA86879	New Soda Dark Blue	1
110357258	PA86879-12	New Soda Dark Blue	12
106255006	PA87104	DTR DSL Series 60 Blue	1
116758800	PA87104-12	DTR DSL Series 60 Blue	12
106275612	PA87189	KRG Blue	1
116758859	PA87189-12	KRG Blue	12
106300411	PA87682	Medium CRN Blue	1
116759025	PA87682-12	Medium CRN Blue	12
106284314	PA88298	UPR Blue	1
110357393	PA88298-12	UPR Blue	12

WARNING: This product can expose you to chemicals including [Methyl Isobutyl Ketone, Titanium Dioxide], which is [are] known to the State of California to cause cancer and birth defects or other reproductive harm. For more information go to www.P65Warnings.ca.gov.

PART #	LEGACY #	COLOR	QTY.
110742834	PA89361	Applied MSS SM Blue	1
116759999	PA89361-12	Applied MSS SM Blue	12
116682799	404399	Dark KBT Blue	1
116682802	404399-12	Dark KBT Blue	12

WARNING: This product can expose you to chemicals including [titanium dioxide, carbon black, methyl isobutyl ketone, ethyl benzene], which is [are] known to the State of California to cause cancer and birth defects or other reproductive harm. For more information go to www.P65Warnings.ca.gov.

PART #	LEGACY #	COLOR	QTY.
106258031	PA87861	GNL Blue	1
116759154	PA87861-12	GNL Blue	12

WARNING: This product can expose you to chemicals including [Methyl Isobutyl Ketone, Toluene], which is [are] known to the State of California to cause cancer and birth defects or other reproductive harm. For more information go to www.P65Warnings.ca.gov.

IPC® Universal & Specially Matched Aerosol Green

- 16 oz. net weight (454 g)
- Enamel

PART #	LEGACY #	COLOR	QTY.
106290374	PA85690	Gloss Bright Green	1
116757828	PA85690-12	Gloss Bright Green	12
106250883	PA86503	DTR DSL Green	1
116758500	PA86503-12	DTR DSL Green	12
106259250	PA86795	New Farm & Implement Green	1
116758727	PA86795-6	New Farm & Implement Green	6
116758722	PA86795-12	New Farm & Implement Green	12
106262836	PA86880	New DTR DSL Green	1
110357259	PA86880-12	New DTR DSL Green	12
106252596	PA87237	SNB Green	1
116758869	PA87237-12	SNB Green	12
110357310	PA87237-24	SNB Green	24
106285289	PA89354	Fast-Dry SNB Green	1
110357536	PA89354-12	Fast-Dry SNB Green	12
110357537	PA89354-24	Fast-Dry SNB Green	24

WARNING: This product can expose you to chemicals including [Methyl Isobutyl Ketone, Titanium Dioxide], which is [are] known to the State of California to cause cancer and birth defects or other reproductive harm. For more information go to www.P65Warnings.ca.gov.

PART #	LEGACY #	COLOR	QTY.
106246762	PA87097	Hunter Green	1
116758783	PA87097-12	Hunter Green	12
106266027	PA87168	Semi-Truck Green	1
110357298	PA87168-12	Semi-Truck Green	12
106299427	PA87732	Waste Green	1
110357360	PA87732-12	Waste Green	12
106292565	PA89144	New Dock Green	1
110357494	PA89144-12	New Dock Green	12
110357495	PA89144-24	New Dock Green	24
110742843	PA92999	Safety Green	1
110742845	PA92999-6	Safety Green	6
116761576	PA92999-12	Safety Green	12

WARNING: This product can expose you to chemicals including [Titanium Dioxide, Carbon Black, Methyl Isobutyl Ketone, Ethyl Benzene], which is [are] known to the State of California to cause cancer and birth defects or other reproductive harm. For more information go to www.P65Warnings.ca.gov.



IPC® Primer Gallon

- * Not for sale in CA, CO, DE, MD, MI, NY, RI, UT
- Industrial enamel



PART #	LEGACY #	COLOR	QTY.
106283237*	PA87515	Light Gray Primer	1
116759009*	PA87515-4	Light Gray Primer	4

⚠ WARNING: This product can expose you to chemicals including [P-Chlorobenzotrifluoride, Titanium Dioxide, Ethyl Benzene, Carbon Black], which is [are] known to the State of California to cause cancer. For more information go to www.P65Warnings.ca.gov.

IPC® Safety Colors Gallons

- * Not for sale in CA, CO, DE, MD, MI, NY, RI, UT
- Industrial enamel



PART #	LEGACY #	COLOR	QTY.
106263770*	PA87513	Safety Red	1
116759004*	PA87513-4	Safety Red	4
106530043*	PA88935	Safety Yellow	1
116759767*	PA88935-4	Safety Yellow	4

⚠ WARNING: This product can expose you to chemicals including [Titanium Dioxide, Ethyl Benzene], which is [are] known to the State of California to cause cancer. For more information go to www.P65Warnings.ca.gov.



True-Grip® Anti-Slip Acrylic Gallon

- Use on concrete, wood, metal, asphalt or stone
- Covers approximately 100-125 sq. ft./gallon
- Acrylic based
- 50 state compliant



PART #	LEGACY #	COLOR	QTY.
102640958	123281	Yellow	1

⚠ WARNING: Cancer and Reproductive Harm www.P65Warnings.ca.gov.

IPC® Universal & Specially Matched Gallons

- * Not for sale in CA, CO, DE, MD, MI, NY, RI, UT
- Industrial enamel

PART #	LEGACY #	COLOR	QTY.
106267597*	PA87506	Gloss White	1
116758983*	PA87506-4	Gloss White	4
106259207*	PA87507	Gloss Black	1
116758988*	PA87507-4	Gloss Black	4
106263770*	PA87513	Gloss Red	1
116759004*	PA87513-4	Gloss Red	4
106264920*	PA87894	SNB Green	1
110357376*	PA87894-4	SNB Green	4

⚠ WARNING: This product can expose you to chemicals including [Titanium Dioxide, Ethyl Benzene], which is [are] known to the State of California to cause cancer. For more information go to www.P65Warnings.ca.gov.

PART #	LEGACY #	COLOR	QTY.
106519481*	PA87509	Dark Gray	1
110357343*	PA87509-4	Dark Gray	4
106279234*	PA87510	Light Gray	1
110357344*	PA87510-4	Light Gray	4

⚠ WARNING: This product can expose you to chemicals including [Titanium Dioxide, Carbon Black, Ethyl Benzene], which is [are] known to the State of California to cause cancer. For more information go to www.P65Warnings.ca.gov.

PART #	LEGACY #	COLOR	QTY.
106261983*	PA87851	OMH Orange	1
116759149*	PA87851-4	OMH Orange	4

⚠ WARNING: This product can expose you to chemicals including [Ethyl Benzene], which is [are] known to the State of California to cause cancer. For more information go to www.P65Warnings.ca.gov.

ACCESSORIES

Spray Grip

- Full grip spray can trigger offers fatigue-free spraying
- Easily snaps on to any standard aerosol paint can

PART #	LEGACY #	DESCRIPTION	QTY.
106295775	PA92510	Spray Grip Trigger	1



Applied MSSSM Wooden Stir Sticks



PART #	LEGACY #	DESCRIPTION	QTY.
116762796	PA99464	14" Wooden Stir Stick	10

Can Topper™ for Gallon Paint Cans

- Easy-Flo™ "no-drip" has wiping edges and brush rest for easy use!
- Snap-on/snap-off for easy clean-up



Easy-Flo™ edges



Brush rest

PART #	LEGACY #	DESCRIPTION	QTY.
106260580	PA92287	Red Plastic Can Topper for Gallon Paint Cans	1

IPC™ VM & P Naphtha Thinner

- 10-to-1 ratio for thinning IPC® primer and enamels

PART #	DESCRIPTION	QTY.
119302497	Gallon (3.78 L)	1
119302498	Gallon (3.78 L)	4

⚠ WARNING: This product can expose you to chemicals including Naphthalene, which is known to the State of California to cause cancer, and Toluene, which is known to the State of California to cause birth defects or other reproductive harm. For more information go to www.P65Warnings.ca.gov.



DID YOU KNOW:

IPC Gallons are made for even heavier duty applications. It can be applied using a brush, roller, or sprayer. It can be used on concrete, wood, asphalt, stone, and even bare metal.



aero-tech™ Aerosol Standard Primers

- 12 oz. net weight (340 g)
- Lacquer

PART #	LEGACY #	COLOR	QTY.
106260521	PA84927	Platinum Primer (Sandable)	1
116757573	PA84927-12	Platinum Primer (Sandable)	12

⚠ WARNING: This product can expose you to chemicals including [Methyl Isobutyl Ketone, Ethyl Benzene], which is [are] known to the State of California to cause cancer and birth defects or other reproductive harm. For more information go to www.P65Warnings.ca.gov.

aero-tech™ Aerosol Zinc Phosphate Primer

- 12 oz. net weight (340 g)
- Lacquer

PART #	LEGACY #	COLOR	QTY.
106267799	PA88539	Green Zinc Phosphate Primer	1
110357421	PA88539-12	Green Zinc Phosphate Primer	12

⚠ WARNING: This product can expose you to chemicals including [Ethyl Benzene], which is [are] known to the State of California to cause cancer and birth defects or other reproductive harm. For more information go to www.P65Warnings.ca.gov.

aero-tech™ Aerosol Tractor / Industrial Colors

- 12 oz. net weight (340 g)
- Enamel

PART #	LEGACY #	COLOR	QTY.
106264717	PA84932	Equipment Mustard Yellow	1
116757594	PA84932-12	Equipment Mustard Yellow	12
106265756	PA85741	Crown Dark Gray	1
110357156	PA85741-12	Crown Dark Gray	12

⚠ WARNING: This product can expose you to chemicals including [Methyl Isobutyl Ketone, Titanium Dioxide] which is [are] known to the State of California to cause cancer and birth defects or other reproductive harm. For more information go to www.P65Warnings.ca.gov.

aero-tech™ Aerosol Standard Colors

- 12 oz. net weight (340 g)
- Enamel

PART #	LEGACY #	COLOR	QTY.
106259799	PA84913	Gloss Black	1
116757547	PA84913-12	Gloss Black	12

⚠ WARNING: This product can expose you to chemicals including [Methyl Isobutyl Ketone] which is [are] known to the State of California to cause cancer and birth defects or other reproductive harm. For more information go to www.P65Warnings.ca.gov.

PART #	LEGACY #	COLOR	QTY.
106295022	PA84915	Semi-Gloss Black	1
110357074	PA84915-12	Semi-Gloss Black	12

⚠ WARNING: This product can expose you to chemicals including [Carbon Black - PBK6, Toluene], which is [are] known to the State of California to cause cancer and birth defects or other reproductive harm. For more information go to www.P65Warnings.ca.gov.

PART #	LEGACY #	COLOR	QTY.
106280669	PA84917	Ultra-Flat Black	1
116757564	PA84917-12	Ultra-Flat Black	12

⚠ WARNING: This product can expose you to chemicals including [Methyl Isobutyl Ketone] which is [are] known to the State of California to cause cancer and birth defects or other reproductive harm. For more information go to www.P65Warnings.ca.gov.

aero-tech™ Aerosol Hi-Heat Resistant Colors

- 12 oz. net weight (340 g)
- Silicone

PART #	LEGACY #	COLOR	QTY.
106295315	PA84923	Aluminum	1
116757568	PA84923-12	Aluminum	12
106292106	PA84924	Black	1
110357081	PA84924-12	Black	12

⚠ WARNING: This product can expose you to chemicals including [Toluene], which is [are] known to the State of California to cause cancer and birth defects or other reproductive harm. For more information go to www.P65Warnings.ca.gov.

aero-tech™ Aerosol Stainless Steel Coating

- 12 oz. net weight (340 g)
- Acrylic lacquer

PART #	LEGACY #	COLOR	QTY.
106249860	PA86213	Stainless Steel	1
116758360	PA86213-6	Stainless Steel	6
116758355	PA86213-12	Stainless Steel	12

⚠ WARNING: This product can expose you to chemicals including [Toluene, Ethyl Benzene], which is [are] known to the State of California to cause cancer and birth defects or other reproductive harm. For more information go to www.P65Warnings.ca.gov.

aero-tech™ Aerosol Cast Iron Coating

- 2 oz. net weight (340 g)
- Acrylic lacquer

PART #	LEGACY #	COLOR	QTY.
106286364	PA84921	Cast Iron Gray	1
110357079	PA84921-12	Cast Iron Gray	12

⚠ WARNING: This product can expose you to chemicals including [Toluene, Ethyl Benzene], which is [are] known to the State of California to cause cancer and birth defects or other reproductive harm. For more information go to www.P65Warnings.ca.gov.

aero-tech™



aero-tech™ Aerosol Tree & Industrial Upright Marking Paint

- 12 oz. net weight (340 g)
- Enamel

PART #	COLOR	QTY.
119471944	White	1
119471945	White	12
119471946	Red	1
119471947	Red	12
119471948	Blue	1
119471949	Blue	12
119471950	Green	1
119471951	Green	12
119471952	Yellow	1
119472183	Yellow	12
119472184	Orange	1
119472185	Orange	12



⚠ WARNING: This product can expose you to chemicals including [Titanium Dioxide, Ethyl Benzene], which is [are] known to the State of California to cause cancer. For more information go to www.P65Warnings.ca.gov.

aero-tech™ Aerosol fluorescent colors

- 12 oz. net weight (340 g)
- Enamel

PART #	COLOR	QTY.
119472186	Fluorescent Orange	1
119472187	Fluorescent Orange	12
119472188	Fluorescent Red	1
119472189	Fluorescent Red	12
119472190	Fluorescent Yellow	1
119472191	Fluorescent Yellow	12
119472192	Fluorescent Green	1
119472193	Fluorescent Green	12
119472194	Fluorescent Blue	1
119472195	Fluorescent Blue	12



⚠ WARNING: This product can expose you to chemicals including [Titanium Dioxide, Ethyl Benzene], which is [are] known to the State of California to cause cancer. For more information go to www.P65Warnings.ca.gov.

aero-tech™ MIX & MATCH INVERTED TIP MARKING PAINT ASSORTMENT

PART #	LEGACY #	DESCRIPTION
106243369	PAP0600	Choose any combination of 50 cases (600 cans) of Inverted Tip Marking Paint with the (+) symbol

aero-tech® Inverted Tip Marking Paint (upside down marking paint) Uses include utilities, construction, maintenance and recreational applications.



Inverted Tip Marking Gun, Wand & Replacement Nozzle

PART #	LEGACY #	DESCRIPTION	QTY.
106256043	PA85985	Short Marking Gun	1
106250809	PA88356	Inverted Tip Long Arm Marking Wand	1
106279149	PA87131	Inverted Tip Replacement Spray Tip	1



106250809

106279149

aero-tech™ Inverted Tip Marking Paint

- 16 oz. net weight (454 g)
- Water-based

PART #	LEGACY #	COLOR	QTY.
116682377	404243	(+) Safety Red	1
116682380	404243-12	(+) Safety Red	12

⚠ WARNING: This product can expose you to chemicals including [Carbon Black, Toluene], which is [are] known to the State of California to cause cancer and birth defects or other reproductive harm. For more information go to www.P65Warnings.ca.gov.

- 17 oz. net weight (482 g)
- Water-based

PART #	LEGACY #	COLOR	QTY.
106245969	PA86632	Black	1
110357231	PA86632-12	Black	12
110655057	PA87142	(+) Pink Fluorescent	1
110357281	PA87142-12	(+) Pink Fluorescent	12
106249506	PA87735	(+) Red Fluorescent	1
110357362	PA87735-12	(+) Red Fluorescent	12
106261212	PA87737	(+) Orange Fluorescent	1
116759091	PA87737-12	(+) Orange Fluorescent	12
106246876	PA87867	(+) Green Fluorescent	1
110357371	PA87867-12	(+) Green Fluorescent	12
106269231	PA87866	(+) Hi-Vis Yellow	1
116759159	PA87866-12	(+) Hi-Vis Yellow	12
106256769	PA87868	(+) Blue Fluorescent	1
110357372	PA87868-12	(+) Blue Fluorescent	12

⚠ WARNING: This product can expose you to chemicals including [Titanium Dioxide], which is [are] known to the State of California to cause cancer and birth defects or other reproductive harm. For more information go to www.P65Warnings.ca.gov.

- 18 oz. net weight (510 g)
- Water-based

PART #	LEGACY #	COLOR	QTY.
106272505	PA87734	(+) White	1
116759081	PA 87734-12	(+) White	12
116759086	PA87734-600	(+) White	600

⚠ WARNING: This product can expose you to chemicals including [Titanium Dioxide], which is [are] known to the State of California to cause cancer and birth defects or other reproductive harm. For more information go to www.P65Warnings.ca.gov.

aero-tech™ Athletic Field Inverted Tip Marking Paint

- 18 oz. net weight (510 g)
- Water-based

PART #	LEGACY #	COLOR	QTY.
106259080	PA86015	Athletic Field White	1
110357177	PA86015-12	Athletic Field White	12

⚠ WARNING: This product can expose you to chemicals including [Titanium Dioxide, Toluene], which is [are] known to the State of California to cause cancer and birth defects or other reproductive harm. For more information go to www.P65Warnings.ca.gov.

aero-tech™ Traffic Inverted Tip Marking Paint

- 18 oz. net weight (510 g)
- Solvent-based
- Works on pavement, concrete, parking lots, warehouses, factories, playgrounds, landing strips and tennis & basketball courts

PART #	LEGACY #	COLOR	QTY.
106299180	PA87179	Non-Bleed White	1
110357300	PA87179-12	Non-Bleed White	12

⚠ WARNING: This product can expose you to chemicals including [Titanium Dioxide, Ethyl Benzene], which is [are] known to the State of California to cause cancer and birth defects or other reproductive harm. For more information go to www.P65Warnings.ca.gov.

PART #	LEGACY #	COLOR	QTY.
106282338	PA87180	Non-Bleed Yellow	1
116758852	PA87180-12	Non-Bleed Yellow	12

⚠ WARNING: This product can expose you to chemicals including [Toluene], which is [are] known to the State of California to cause cancer and birth defects or other reproductive harm. For more information go to www.P65Warnings.ca.gov.



Traffic Inverted Tip Marking Machine

PART #	LEGACY #	DESCRIPTION	QTY.
106285629	PA85699	Traffic Marking Striping Machine	1

Traffic Inverted Tip Marking Wand & Replacement Nozzle

PART #	LEGACY #	DESCRIPTION	QTY.
106256912	PA85700	Traffic Marking Curb Marking Wand	1
110707876	PA87130	Traffic Marking Replacement Nozzle	10



Reusable Stencil Board Marking Stencils

- 3" Letter and number kit includes: A - Z, 0 - 9, one extra letter A, E, R, S, period (.) and ampersand (&)
- Use with aero-tech™ inverted tip marking paints and marking machine Part # 106285629

PART #	LEGACY #	DESCRIPTION	QTY.
106271041	PA87523	3" Letter & Number Kit	1
106292007	PA87531	12" No Parking Kit	1

⚠ WARNING: This product can expose you to chemicals which are known to the State of California to cause cancer and birth defects or other reproductive harm. For more information go to www.P65Warnings.ca.gov.



Nu-Day™ Standard Colors

- 12 oz. net weight (340 g)
- Enamel

PART #	LEGACY #	COLOR	QTY.
116690285	407210	Gloss Black	1
116690288	407210-12	Gloss Black	12
116690291	407210-24	Gloss Black	24

⚠ WARNING: This product can expose you to chemicals including [Toluene, Carbon Black - PBK6], which is [are] known to the State of California to cause cancer and birth defects or other reproductive harm. For more information go to www.P65Warnings.ca.gov.

PART #	LEGACY #	COLOR	QTY.
116499932	407211	Flat Black	1
116690297	407211-12	Flat Black	12
116690300	407211-24	Flat Black	24
116690303	407212	Satin Black	1
116690306	407212-12	Satin Black	12
116690309	407212-24	Satin Black	24
116690379	407220	Gloss Cherry Red	1
116690382	407220-12	Gloss Cherry Red	12
116690385	407220-24	Gloss Cherry Red	24

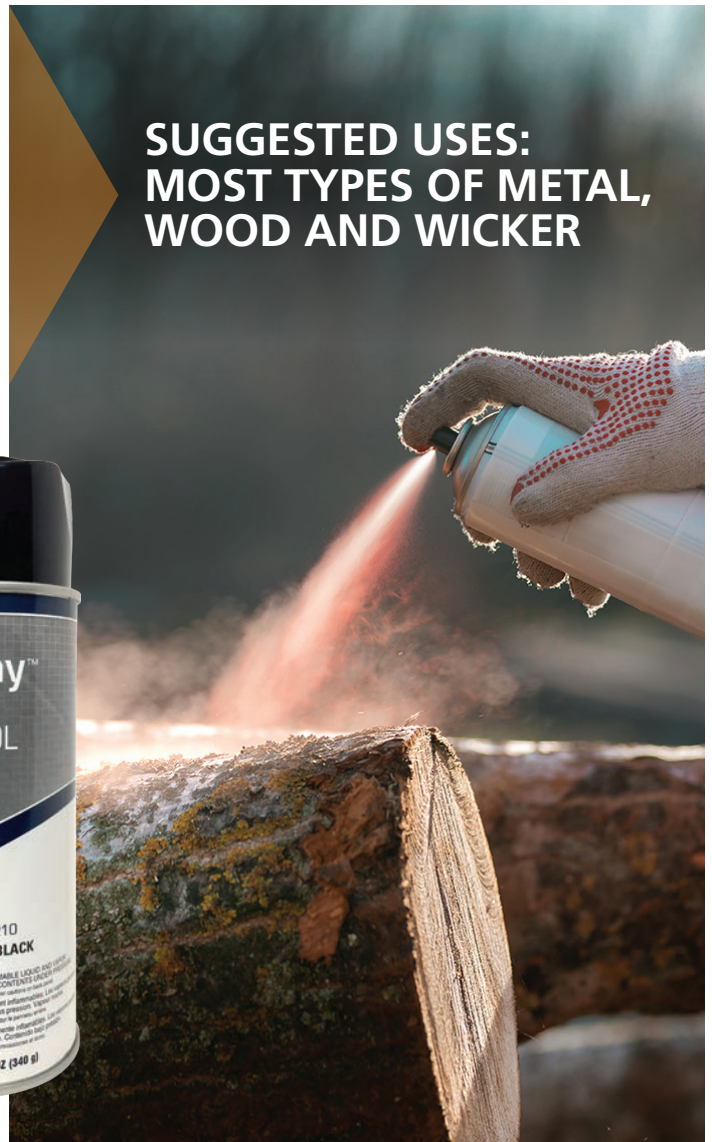
⚠ WARNING: This product can expose you to chemicals including [Toluene], which is [are] known to the State of California to cause cancer and birth defects or other reproductive harm. For more information go to www.P65Warnings.ca.gov.

PART #	LEGACY #	COLOR	QTY.
116690312	407213	Gloss White	1
116690315	407213-12	Gloss White	12
116690318	407213-24	Gloss White	24
116690414	407224	Gloss Dark Blue	1
116690417	407224-12	Gloss Dark Blue	12
116690420	407224-24	Gloss Dark Blue	24
116690424	407225	Gloss Medium Blue	1
116690426	407225-12	Gloss Medium Blue	12
116690429	407225-24	Gloss Medium Blue	24
116690451	407228	Gloss Hunter Green	1
116690453	407228-12	Gloss Hunter Green	12
116690456	407228-24	Gloss Hunter Green	24
116690468	407230	Gloss Smoke Gray	1
116690471	407230-12	Gloss Smoke Gray	12
116690474	407230-24	Gloss Smoke Gray	24

⚠ WARNING: This product can expose you to chemicals including [Toluene, Titanium Dioxide], which is [are] known to the State of California to cause cancer and birth defects or other reproductive harm. For more information go to www.P65Warnings.ca.gov.



**SUGGESTED USES:
MOST TYPES OF METAL,
WOOD AND WICKER**



Check out the entire line of flammable cabinets in the storage section of the Applied MSSSM digital catalog at catalog.appliedmss.com.



Xylene-Free Industrial Paint Markers

PART #	LEGACY #	COLOR	QTY.
106295295	PA89705	Black	1
116760119	PA89705-12	Black	12
106251781	PA89706	Blue	1
116760124	PA89706-12	Blue	12
106254953	PA89707	Green	1
116760130	PA89707-12	Green	12
106287024	PA89708	Red	1
116760136	PA89708-12	Red	12
106272210	PA89709	White	1
116760141	PA89709-12	White	12
106248633	PA89710	Yellow	1
116760146	PA89710-12	Yellow	12
106269296	PA89711	Orange	1
116760153	PA89711-12	Orange	12
106272310	PA89712	Light Green	1
106277984	PA89713	Silver	1
116760156	PA89713-12	Silver	12
106252896	PA89714	Pink	1
106285744	PA89715	Violet	1
106291981	PA89716	Light Blue	1
106272210	PA89709	White	2
106292308	PA89717	Gold	1
106248633	PA89710	Yellow	2
106296662	PA89718	Brown	1
106269296	PA89711	Orange	1
106298522	PA89719	Gray	1
116727310	PA89712	Light Green	1
116743638	PA19082	6-Comp Plastic Box - Large	1



⚠️ WARNING: This product can expose you to chemicals including [Titanium Dioxide, Carbon Black], which is [are] known to the State of California to cause cancer. For more information go to www.P65Warnings.ca.gov.

Heavy Duty Industrial Paint Markers

PART #	LEGACY #	COLOR	QTY.
120582407	-	White	1
102053042	104176	White	6
103878621	104176-4	White	24
120582408	-	Yellow	1
103615481	104177	Yellow	6
103889153	104177-4	Yellow	24
103875591	104177-8	Yellow	48
120582406	-	Black	1
102052859	104178	Black	6
103875659	104178-4	Black	24
103882985	104178-8	Black	48
120582409	-	Red	1
103630572	104179	Red	6
103875445	104179-4	Red	24
103882895	104179-8	Red	48
120582410	-	Gray	1
116681373	105132	Gray	6
103875593	105132-4	Gray	24
103876636	105132-8	Gray	48
120582411	-	Green	1
116681377	105133	Green	6
103875446	105133-4	Green	24
103882896	105133-8	Green	48



⚠️ WARNING: This product can expose you to chemicals including [Titanium Dioxide, Carbon Black], which is [are] known to the State of California to cause cancer. For more information go to www.P65Warnings.ca.gov.

Heavy Duty Industrial Paint Marker Assortment Part #112097438 | 104792

Assortment Includes:

PART #	COLOR	QTY.
120582407	White	3
120582408	Yellow	3
120582406	Black	3
120582409	Red	3



⚠️ WARNING: This product can expose you to chemicals including [Titanium Dioxide, Carbon Black], which is [are] known to the State of California to cause cancer. For more information go to www.P65Warnings.ca.gov.

Xylene-Free Industrial Paint Markers Assortment Part #110695800 | PA88062



Assortment Includes:

PART #	LEGACY #	DESCRIPTION	QTY.
106295295	PA89705	Black	3
106277984	PA89713	Silver	1
106251781	PA89706	Blue	1
106252896	PA89714	Pink	1
106254953	PA89707	Green	1
106285744	PA89715	Violet	1
106287024	PA89708	Red	1
106291981	PA89716	Light Blue	1
106272210	PA89709	White	2
106292308	PA89717	Gold	1
106248633	PA89710	Yellow	2
106296662	PA89718	Brown	1
106269296	PA89711	Orange	1
106298522	PA89719	Gray	1
116727310	PA89712	Light Green	1
116743638	PA19082	6-Comp Plastic Box - Large	1

⚠️ WARNING: This product can expose you to chemicals including [Titanium Dioxide, Carbon Black], which is [are] known to the State of California to cause cancer. For more information go to www.P65Warnings.ca.gov.

Paint Marker Accessories

PART #	LEGACY #	DESCRIPTION	QTY.
106245468	PA89720	Chisel/Bullet Replacement Nibs	10
106261672	PA89721	Paint Marker Holder	1



Heavy Duty Industrial Paint Marker Assortment Part #102252849 | 00499



Assortment Includes:

PART #	LEGACY #	DESCRIPTION	QTY.
120582407		White	6
120582408		Yellow	6
120582406		Black	6
120582409		Red	6
120582410		Gray	6
120582411		Green	6
106517101	B01025	Standard Drawer, 6 vertical slots, Blue	1

⚠️ WARNING: This product can expose you to chemicals including [Titanium Dioxide, Carbon Black], which is [are] known to the State of California to cause cancer. For more information go to www.P65Warnings.ca.gov.

Heavy Duty Industrial Paint Marker Kwik Pak Part #102262378 | 00491KP

Assortment Includes:

PART #	LEGACY #	COLOR	QTY.
120582407		White	2
120582408		Yellow	2
120582406		Black	2
120582409		Red	2
120582410		Gray	2
120582411		Green	2
101746662	117167	4-Comp Adjustable Tray	1



⚠️ WARNING: This product can expose you to chemicals including [Titanium Dioxide, Carbon Black], which is [are] known to the State of California to cause cancer. For more information go to www.P65Warnings.ca.gov.

China Bristle Varnish Brushes

PART #	LEGACY #	WIDTH	QTY.
110267547	PA92030	1"	1
106298686	PA92031	1-1/2"	1
110267550	PA92032	2"	1
110267553	PA92034	3"	1
106287839	PA92035	4"	1



Polyester Paint Brushes

PART #	LEGACY #	WIDTH	QTY.
116682355	10848	1"	12
116682359	10849	2"	12
116682362	10851	3"	12



Disposable Chip Brushes

PART #	LEGACY #	WIDTH	QTY.
116712604	200483	1/2"	6
116682365	10853	1"	12
116682368	10854	2"	12
116712616	200487	3"	3
116712619	200488	4"	3



3" Trim Roller Cover with Wire Frame

PART #	LEGACY #	NAP	SURFACE	QTY.
106259366	PA92044	3/8"	Trim	1
116761225	PA92044-12	3/8"	Trim	12



9" Professional Roller Cover

PART #	LEGACY #	NAP	SURFACE	QTY.
106275002	PA92040	3/16"	Smooth	1
114447420	PA92040-12	3/16"	Smooth	12
106280574	PA92041	1/2"	Semi-smooth	1
116761210	PA92041-12	1/2"	Semi-smooth	12
106261422	PA92042	3/4"	Rough	1
116761215	PA92042-12	3/4"	Rough	12



9" Economy Roller Cover

PART #	LEGACY #	NAP	SURFACE	QTY.
106287524	PA92038	3/8"	Semi-smooth	1
116761204	PA92038-12	3/8"	Semi-smooth	12
106262491	PA92039	1/2"	Semi-smooth	1

9" Standard Duty 4-Wire Cage Roller Frame

PART #	LEGACY #	FRAME	HANDLE	QTY.
106293902	PA92043	1/4" dia.	Plastic	1
116761220	PA92043-6	1/4" dia.	Plastic	6



9" Galvanized Steel Paint Tray

PART #	LEGACY #	CAPACITY	QTY.
106278512	PA92045	2 Quart	1
114447422	PA92045-6	2 Quart	6



9" Plastic Paint Tray Liner

PART #	LEGACY #	CAPACITY	QTY.
110267626	PA92199	2 Quart	1

Plastic Sheeting Roll

PART #	LEGACY #	SIZE	THICKNESS	QTY.
106242685	PA92047	12' x 50'	4 mil	1

Multi-Surface Painter's Tape

PART #	LEGACY #	COLOR	SIZE	THICKNESS	QTY.
110489177	PA17835	Blue	1" x 60 yds.	5.6 mil	1
110489178	PA17836	Blue	1-1/2" x 60 yds.	5.6 mil	1
110489179	PA17837	Blue	2" x 60 yds.	5.6 mil	1



3M® General Purpose Masking Tape 234

PART #	LEGACY #	COLOR	SIZE	THICKNESS	QTY.
106286239	PA18621	Tan	3/4" x 60 yds.	5.9 mil	1
106254607	PA18622	Tan	1" x 60 yds.	5.9 mil	1
106248050	PA18623	Tan	2" x 60 yds.	5.9 mil	1



Industrial Grade Masking Tape

• Not recommended for heat applied painting

PART #	LEGACY #	COLOR	SIZE	THICKNESS	QTY.
102643047	10877	Tan	3/4" x 60 yds.	5.6 mil	1
102639195	10879	Tan	1" x 60 yds.	5.6 mil	1
106267863	PA21072	Tan	1-1/2" x 60 yds.	5.6 mil	1
102640232	10880	Tan	2" x 60 yds.	5.6 mil	1



Painters/Contractors Grade Masking Tape

PART #	LEGACY #	COLOR	SIZE	THICKNESS	QTY.
110489174	PA17830	Tan	1" x 60 yds.	5.4 mil	1
110489175	PA17831	Tan	1-1/2" x 60 yds.	5.4 mil	1
110489176	PA17832	Tan	2" x 60 yds.	5.4 mil	1

General Purpose Grade Masking Tape

PART #	LEGACY #	COLOR	SIZE	THICKNESS	QTY.
102639194	10206	Tan	3/4" x 60 yds.	5.0 mil	1
102638935	10207	Tan	1" x 60 yds.	5.0 mil	1
106296669	PA13761	Tan	1-1/2" x 60 yds.	5.0 mil	1
106286135	PA17852	Tan	2" x 60 yds.	5.0 mil	1

Barricade "Caution" Tape



PART #	LEGACY #	COLOR	SIZE	QTY.
106286848	PA17877	Yellow, "Caution" in Black	3" x 1000'	1

Flagging Tape

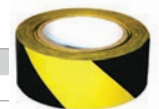


PART #	LEGACY #	COLOR	SIZE	QTY.
116692850	407997	Fluorescent Pink	1-3/16" x 150'	1
116692853	407997-12	Fluorescent Pink	1-3/16" x 150'	12
116692856	407998	Fluorescent Lime	1-3/16" x 150'	1
116692858	407998-12	Fluorescent Lime	1-3/16" x 150'	12
116692861	407999	Standard Blue	1-3/16" x 300'	1
116692866	407999-12	Standard Blue	1-3/16" x 300'	12
116692927	408011	Yellow/Black	1-3/16" x 300'	1
116692931	408011-12	Yellow/Black	1-3/16" x 300'	12

Safety Striping Tape

• For marking only, not slip resistant

PART #	LEGACY #	COLOR	SIZE	QTY.
102643046	10215	Yellow/Black	2" x 36 yds.	1





Retractable Scraper

- Use with Part # 101745031 replacement blades

PART #	LEGACY #	DESCRIPTION	QTY.
102720773	177944	7-7/8" Overall Length	1



Razor Scraper

- Use with Part #101745031 or #106254886

PART #	LEGACY #	DESCRIPTION	QTY.
102702307	10320	4" Overall Length	1

Industrial Razor Blades

PART #	LEGACY #	DESCRIPTION	QTY.
101745031	10319	Single Edge, 100/Box	1
106254886	PA16735	Plastic, 100/Box	1

⚠️ WARNING: This product can expose you to chemicals including Propylene, which is known to the State of California to cause Cancer. For more information go to www.P65Warnings.ca.gov.



Utility Knife

PART #	LEGACY #	DESCRIPTION	QTY.
106282262	PA90593	Retractable Blade, Locks in 3 Positions	1
116760868	PA90594	Replacement Blades	5



116689912



116689918

Klever Cutter™

PART #	LEGACY #	DESCRIPTION	QTY.
116689912	407032	Yellow, 1.25"W x 4.625"L	10
116689918	407033	Blue, Metal Detectable, 1.25"W x 4.625"L	10



Stainless Steel Scrapers

PART #	LEGACY #	DESCRIPTION	QTY.
106267852	PA91114	3" S/S Scraper - Stiff	1
106285736	PA91115	3" S/S Joint Knife - Flexible	1
110489172	PA91119	8-in-1 S/S Multi-Tool	1

⚠️ WARNING: Cancer and Reproductive harm - www.P65Warnings.ca.gov.



Scratch Brush

- Plastic handle

PART #	LEGACY #	DESCRIPTION	QTY.
101746136	111353	Trim 1-1/8"	1

⚠️ WARNING: This product can expose you to chemicals including [Lead], which is [are] known to the State of California to cause cancer and birth defects or other reproductive harm. For more information go to www.P65Warnings.ca.gov.

Wire Scratch Brushes

- Wooden handle

PART #	LEGACY #	MATERIAL	QTY.
102716084	10969	Steel	1
106266046	PA12452	Carbon Steel	1
101744187	200491	Steel	1



Crimped Wire Cup Brushes

- For general purpose applications

PART #	LEGACY #	DIA.	WIRE SIZE	TRIM LENGTH	M.S.F.S.	QTY.
106248898	PA92008	1-3/4"	.012	3/4"	13,000	1
106299918	PA92009	2"	.012	5/8"	13,000	1
106533876	PA92010	2-3/4"	.014	7/8"	13,000	1

⚠️ WARNING: Cancer and Reproductive harm - www.P65Warnings.ca.gov.



Crimped Wire End Brushes

- Solid end
- For light duty, general purpose applications

PART #	LEGACY #	DIA.	WIRE SIZE	TRIM LENGTH	M.S.F.S.	QTY.
106283383	PA90920	3/4"	.020	1"	22,000	1
106252260	PA90921	1"	.020	1"	20,000	1

⚠️ WARNING: Cancer and Reproductive harm - www.P65Warnings.ca.gov.



Crimped Wire Wheel

- Used to remove rust & paint from small areas such as drip rails, tire beads and rims, inside trunks, etc.

PART #	LEGACY #	DIA.	WIRE SIZE	M.S.F.S.	QTY.
110489104	PA91778	3"	.008	20,000	1

⚠️ WARNING: Cancer and Reproductive harm - www.P65Warnings.ca.gov.



Surface Strip Depressed Center Discs

- Open web construction; smear resistant formula
- Extra coarse grit; quick cleaning and conditioning of surfaces
- Excellent for removal of surface rust and residue, corrosion, light weld splatter, dirt, mill scale and other surface contaminants
- Silicon carbide provides rapid removal

PART #	LEGACY #	DIA.	ARBOR	GRIT	MAX RPM	QTY.
110489099	PA19934	4-1/2"	5/8-11"	Ex-Coarse S/C	10,500	2
106281835	PA19935	4-1/2"	7/8"	Ex-Coarse S/C	10,500	2



3M™ Surface Conditioning Flap Discs

- Overlapping, durable surface conditioning flaps provide several layers of abrasives throughout the disc life
- Mounted on a firm phenolic plate that provides a cushioned effect for blending
- Type 27 shape with 6 degree taper provides increased stock removal
- **Applications:** deburring, blending, cleaning, edge breaking, finishing and polishing after traditional grinding is done with resin fiber or flap disc on aluminum, steel and titanium

PART #	LEGACY #	DIA.	GRIT	COLOR	QTY.
106275123	PA17358	4-1/2" x 7/8"	Medium	Maroon	1
106267800	PA17359	4-1/2" x 7/8"	Very Fine	Blue	1



SAF-LINE™ Classic Safety Glasses

- Ultra-light weight
- Soft and longer temples, holds glasses in place
- All day comfort for any job site
- Individually packaged for vending



PART #	LEGACY #	FRAME	TEMPLE	LENS	COATING	QTY.
116693228	408131	Clear/MSS™ Blue	Clear	Clear	Anti-Scratch	1
116693231	408131-10	Clear/MSS™ Blue	Clear	Clear	Anti-Scratch	10

WARNING: This product can expose you to chemicals including [Bisphenol A (BPA)], which is [are] known to the State of California to cause cancer and birth defects or other reproductive harm. For more information go to www.P65Warnings.ca.gov.

SAF-LINE™ Advanced Safety Glasses

- Brow guard helps block debris
- Lower temple component soft and flexible
- Comfortable & soft rubber nose piece
- Individually packaged for vending



PART #	LEGACY #	FRAME	TEMPLE	LENS	COATING	QTY.
116693234	408132	Clear/MSS™ Blue	Clear	Clear	Anti-Scratch	1
116693237	408132-10	Clear/MSS™ Blue	Clear	Clear	Anti-Scratch	10

WARNING: This product can expose you to chemicals including [Bisphenol A (BPA)], which is [are] known to the State of California to cause cancer and birth defects or other reproductive harm. For more information go to www.P65Warnings.ca.gov.

SAF-LINE™ Pro Safety Glasses

- Polycarbonate wrap around lens
- Contoured temple tips
- Comfortable & soft rubber nose piece
- Individually packaged for vending



PART #	LEGACY #	FRAME	TEMPLE	LENS	COATING	QTY.
116693241	408133	MSS™ Blue	MSSSM Blue	Clear	Anti-Scratch	1
116693244	408133-10	MSS™ Blue	MSSSM Blue	Clear	Anti-Scratch	10



Starlite® Safety Eyewear

- Incredibly lightweight, weighing less than one ounce
- Deep, universal-fit temples provide side protection equal to that of large side shields



PART #	LEGACY #	LENS	TEMPLE	QTY.
110696208	PA92339	Clear	Clear	1
118376081	PA92339-10	Clear	Clear	10



Starlite® Squared Safety Eyewear

- Contemporary, squared lens design
- Incredibly light, all-around impact protection
- Soft, flexible nose piece and rubber temples provide extra comfort



PART #	LENS	TEMPLE	COATING	QTY.
118646143	Clear	Clear	Anti-Scratch	1
118646144	Clear	Clear	Anti-Scratch	10

Safety Eyewear Retainers

PART #	DESCRIPTION	QTY.
117218124	Gismo™, 100% Cotton, Black	1
117218123	DooDadz™, Nylon/Poly, Black	1
117218012	Cordz™, 100% Nylon, Black	1



Safety Glasses Acrylic Dispenser

- Hold approximately 20 pair of safety glasses



PART #	LEGACY #	QTY.
116689792	406915	1

SAF-LINE™ Industrial Grip Disposable Gloves - Blue

- 8 mil thickness, 12" L beaded cuff
- Powder free, nitrile and fully textured
- 50 gloves/dispenser box

PART #	LEGACY #	SIZE	QTY.
119210753	-	S	1
119210754	-	S	10
116692768	407988	M	1
116692771	407988-10	M	10
116692780	407989	L	1
116692783	407989-10	L	10
116692792	407990	XL	1
116692795	407990-10	XL	10
116692805	407991	XXL	1
116692809	407991-10	XXL	10
119210755	-	XXXL	1
119210756	-	XXXL	10



Vend-Ready Packaged, 10 gloves/box

PART #	LEGACY #	SIZE	QTY.
116692774	407988VP	M	1
116692777	407988VP-50	M	50
116692786	407989VP	L	1
116692789	407989VP-50	L	50
116692798	407990VP	XL	1
116692802	407990VP-50	XL	50
116692812	407991VP	XXL	1
116692814	407991VP-50	XXL	50



SAF-LINE™ Industrial Grip Disposable Gloves - Hi-Vis Orange

- 7 mil thickness, 9" L beaded cuff
- Powder free, nitrile with diamond grip
- 100 gloves/dispenser box (XL, XXL 90 gloves/box, XXXL 80 gloves/box)

PART #	LEGACY #	SIZE	QTY.
119210745	-	S	1
119210746	-	S	10
115525536	407980	M	1
116692682	407980-10	M	10
114977519	407981	L	1
116692692	407981-10	L	10
114977521	407982	XL	1
116692701	407982-10	XL	10
114977588	407983	XXL	1
116692709	407983-10	XXL	10
119210747	-	XXXL	1
119210748	-	XXXL	10



Vend-Ready Packaged, 20 gloves/box

PART #	LEGACY #	SIZE	QTY.
116692685	407980VP	M	1
116692688	407980VP-40	M	40
116692694	407981VP	L	1
116692698	407981VP-40	L	40
116692704	407982VP	XL	1
116692706	407982VP-40	XL	40
116692713	407983VP	XXL	1
116692716	407983VP-40	XXL	40



SAF-LINE™ Industrial Grip Disposable Gloves - Black

- 7 mil thickness, 9" L beaded cuff
- Powder free, nitrile with tire tread grip
- 100 gloves/dispenser box (XL, XXL 90 gloves/box, XXXL 80 gloves/box)

PART #	LEGACY #	SIZE	QTY.
119210749	-	S	1
119210750	-	S	10
116692719	407984	M	1
116692722	407984-10	M	10
116692732	407985	L	1
116692734	407985-10	L	10
116692744	407986	XL	1
116692747	407986-10	XL	10
116692755	407987	XXL	1
116692759	407987-10	XXL	10
119210751	-	XXXL	1
119210752	-	XXXL	10



Vend-Ready Packaged, 20 gloves/box

PART #	LEGACY #	SIZE	QTY.
116692725	407984VP	M	1
116692729	407984VP-40	M	40
116692738	407985VP	L	1
116692741	407985VP-40	L	40
116692749	407986VP	XL	1
116692752	407986VP-40	XL	40
116692762	407987VP	XXL	1
116692765	407987VP-40	XXL	40



SAF-LINE™ Industrial Grip Disposable Gloves - Hi-Vis Green

- 6 mil thickness, 9" L beaded cuff
- Powder free, nitrile with diamond grip
- 100 gloves/dispenser box (XL, XXL 90 gloves/box, XXXL 80 gloves/box)

PART #	SIZE	QTY.
119210555	S	1
119210556	S	10
119210557	M	1
119210558	M	10
119210559	L	1
119210560	L	10
119210561	XL	1
119210562	XL	10
119210733	XXL	1
119210734	XXL	10
119210735	XXXL	1
119210736	XXXL	10



Vend-Ready Packaged, 20 gloves/box

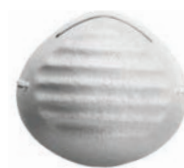
PART #	SIZE	QTY.
119210737	M	1
119210738	M	40
119210739	L	1
119210740	L	40
119210741	XL	1
119210742	XL	40
119210743	XXL	1
119210744	XXL	40



Nuisance Dust Masks

- 50/box, 12 boxes/case
- Provides protection against non-toxic and airborne dust, pollen, mold, and common airborne allergens
- Not NIOSH approved nor intended to protect from harmful vapors

PART #	QTY.
119300486	1
119300487	12



Truair® N95 Disposable Respirators

- NIOSH approved N95 protection
- Adjustable metal nose piece, non-latex elastic head straps

PART #	LEGACY #	VALVE TYPE	QTY.
116681167	403274	Unvented	20
116681171	403274-240	Unvented	240
116681176	403277	Vented	10
116681180	403277-120	Vented	120



Peakfit® N95 Disposable Respirators

- NIOSH approved N95 protection
- Molded nose bridge with no metal nosepiece
- Adjustable one-piece cloth head strap

PART #	LEGACY #	VALVE TYPE	QTY.
116681149	403270	Unvented	20
116681152	403270-240	Unvented	240
116681158	403272	Vented	10
116681161	403272-120	Vented	120



KeyGuard® Coveralls

- Elastic wrists and ankles, white

PART #	LEGACY #	SIZE	QTY.
106260757	PA92634	M	1
106260151	PA92635	L	1
116762813	PAC2635	L	25
106284959	PA92636	XL	1
116762819	PAC2636	XL	25
106253596	PA92637	XXL	1
116762824	PAC2637	XXL	25
110696220	PA92657	XXXL	1



Disposable Shoe Covers

- Blue, non-skid patterned, elastic top

PART #	LEGACY #	COLOR	SIZE	QTY.
116683903	404800	Blue	L	100
116683906	404800-3	Blue	L	300
116683909	404801	Blue	XL	100
116683912	404801-3	Blue	XL	300
120019152	-	White	L	100
120019153	-	White	L	300
120019154	-	White	XL	100
120019155	-	White	XL	300



SAF-LINE™ HI-VIS ORANGE AND HI-VIS GREEN NITRILE GLOVES ARE EASILY SEEN IN DARK ENGINE COMPARTMENTS.



TOWELS & WIPERS

Aero-Chem® Boss Towels Hand Cleaner System

- Waterless hand cleaner towels
- Removes grease, tar, graphite, printers ink and more
- No rinsing, no drying, no residue
- Each dispensing canister contains 72 each 10-1/2" x 12-1/4" perforated, high strength absorbent cleaning cloths

PART #	LEGACY #	SCENT	QTY.
106506004	PA18251	Citrus	1
116742472	PA18251-6	Citrus	6



Aero-Chem® Hand and Multi-Surface Towels

- 75 wipers/container

PART #	LEGACY #	SCENT	QTY.
116682787	404397	Cherry	1
114934933	404397-6	Cherry	6
117993576	-	Citrus	1
117993577	-	Citrus	6



Aero-Chem® Graffiti & Paint Remover Towels

- 30 wipers/container

PART #	LEGACY #	QTY.
110485619	PA18439	1
116742779	PA18439-6	6



Tork® Industrial Cleaning Cloth

- Its strong texture and high absorbency makes it ideal for removing oil, grease, lubricants and dirt
- Meets your cleaning needs due to suitability with most solvents, disinfectants, and detergents
- This product comes in a protective portable Handy-Box, which makes the cleaning cloth easily available where needed

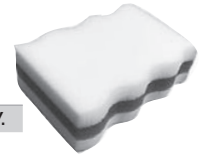
PART #	DESCRIPTION	COLOR	QTY.
119705564	16.3" x 14"	Grey	1



MSSSM Supreme Scrub Sponge

- Environmentally friendly: use only water instead of harsh chemicals to remove stains
- Melamine over foam rubber core

PART #	LEGACY #	DESCRIPTION	QTY.
116693048	408068	4.33"W x 2.75"D x 1.55"H	24



MSSSM Classic Scrub Sponge

- Environmentally friendly: use only water instead of harsh chemicals to remove stains
- Tough on stains: removes permanent marker, crayon, ink, scuff marks, soap scum, tar, graffiti, wine stains
- Safe on most surfaces: use on painted surfaces, floors, wallpaper, porcelain, enamel, plastics, vinyl, leather, automotive, copper, brass, stainless steel

PART #	LEGACY #	DESCRIPTION	QTY.
116693051	408069	100% Melamine, 4.25"W x 2.75"D x 1.125"H	48



The Champ Wipes

- 225 wipers/center pull tote box, 9-1/4" x 12"

PART #	LEGACY #	QTY.
106300453	PA18804	1



Cotton Cloth Rags

PART #	LEGACY #	DESCRIPTION	QTY.
101736454	67352	5 lb. Box	1
106289634	PA18709	10 lb. Bag	1
116706857	7848796	50 lb. Bag	1



Tork® Heavy Duty Wipers

- 1/4 fold, 12-1/2" x 13", 90 wipers/pack

PART #	LEGACY #	QTY.
116761651	PA97111	12
110357757	PA97111-90	60



DID YOU KNOW:

Our Aero-Chem® Hand and Multi-Surface Towels are now available in both cherry and citrus scents. These towels remove paint, grease, adhesive, caulk, lubricants, ink and other grime without drying your hands. No water required.

Aero-Chem® Hand and Multi-Surface Towels contain Aloe and ProVitamin B5, healing and moisturizing agents that prevent drying and cracking. Doesn't contain alcohol or hazardous volatile organic compounds (VOC's).



HandWorks® Foaming Anti-Bacterial Hand Soap

- Formulated with 0.13% Benzalkonium Chloride, does not contain Triclosan
- Lathers up quickly, moisturizes and deodorizes while leaving hands clean
- A transparent amber gold appearance with a citrus-spice fragrance
- Easy-to-grip bottle with indented sides

PART #	DESCRIPTION	COLOR	SCENT	QTY.
119472201	1000ml (34 oz.)	Clear Amber Gold	Citrus-Spice	8



HandWorks® Foaming Spring Meadow Hand Soap

- General purpose foaming hand soap
- Light blue color with spring meadow fragrance
- Contains Aloe and Vitamin E to help nourish the skin
- Easy-to-grip bottle with indented sides

PART #	DESCRIPTION	COLOR	SCENT	QTY.
119472200	1000ml (34 oz.)	Light Blue	Spring Meadow	8



HandWorks® Soyscrub Industrial Hand Cleaners

PART #	LEGACY #	DESCRIPTION	SCENT	QTY.
118671949	-	Refill Bottle, 2125ml	Light Citrus	4
116682829	404409	Refill Bottle, 4000ml	Light Citrus	2
118671950	-	Refill Bottle, 2125ml	Cherry	4
116682834	404412	Refill Bottle, 4000ml	Cherry	2



HandWorks® Soyscrub Industrial Dispensers

PART #	LEGACY #	DESCRIPTION	COLOR	QTY.
112977848	404406	2125 ml	Black	1
112521421	404411	4000 ml	Black	1



HandWorks® Pink Lotion Hand Soap

- A general purpose lotion soap
- Opaque pink color with almond fragrance
- Formulated to remove medium to heavy soils
- Contains rich emollients to soften the skin
- Great to use in any bulk liquid hand soap dispenser

PART #	DESCRIPTION	COLOR	SCENT	QTY.
119472198	Gallon 128 oz. (3.78 L)	Pink	Almond	1
119472199	Gallon 128 oz. (3.78 L)	Pink	Almond	4



HandWorks® Dispensers for Gallons

PART #	LEGACY #	DESCRIPTION	COLOR	QTY.
116686094	405586	Gallon Wall Mount Bracket	Blue	1
106284382	PA16577	Gallon Pump Dispenser	White	1
106270147	PA22028	Flat-Top Lotion Soap Dispenser	Black	1



HandWorks® Heavy Duty Cherry Gel Hand Cleaner With Pumice

- Use with dispenser Part #116686091

PART #	DESCRIPTION	COLOR	SCENT	QTY.
119705578	2000 ml (67.6 Fl. oz.)	Red	Cherry	4



HandWorks® Grit Strip Heavy Duty Hand Cleaner

- Use with dispenser Part #116686091

PART #	LEGACY #	DESCRIPTION	SCENT	QTY.
116686085	405583	2000 ml (67.6 Fl. oz.)	Lemon-Lime	2



PART #	LEGACY #	DESCRIPTION	SCENT	QTY.
106296308	PA22169	Flat-Top Gallon 128 Fl oz. (3.78 L)	Lemon-Lime	1
110357019	PA22169-4	Flat-Top Gallon 128 Fl oz. (3.78 L)	Lemon-Lime	4



HandWorks® Ultimate Orange Heavy Duty Hand Cleaner

- Use with dispenser Part #116686091

PART #	LEGACY #	DESCRIPTION	SCENT	QTY.
116686072	405580	2000 ml (67.6 Fl. oz.)	Orange	2



PART #	LEGACY #	DESCRIPTION	SCENT	QTY.
116686076	405581	Flat-Top Gallon 128 Fl oz. (3.78 L)	Orange	1
116686079	405581-4	Flat-Top Gallon 128 Fl oz. (3.78 L)	Orange	4



HandWorks® Dispensers

PART #	LEGACY #	DESCRIPTION	COLOR	QTY.
116686091	405585	Dispenser for 2000 ml	Black	1



HANDWORKS® HAND CARE SOLUTIONS FOR EVERY MARKET

Applied MSSSM offers a wide-range of HandWorks® commercial and industrial hand care products and dispensers for every market. Learn how our solutions can work for your location.



General Office & Public Restrooms



Manufacturing & Assembly



Food Processing & Packaging



Construction & Mining



Automotive & Transportation



Schools & Universities

HandWorks® Foaming Luxury Hand Soap

- Effective general purpose hand soap
- Soft, rich foam cleans light to medium soils
- Contains Aloe and Vitamin E
- Rose color with tropical fragrance



PART #	DESCRIPTION	QTY.
118671946	1000ml (33.8 oz.) Refill Bag	6

Applied MSSSM Manual Touch Foaming Hand Soap Dispensers

- Efficient and durable hand soap dispensers for any location
- Easy to load and change refills

PART #	DESCRIPTION	COLOR	QTY.
118671719	Manual Touch Dispenser	Black	1
118671720	Manual Touch Dispenser	Gray	1
118671721	Manual Touch Dispenser	White	1

Applied MSSSM No Touch Foaming Hand Soap Dispensers

PART #	DESCRIPTION	COLOR	QTY.
118671716	No Touch Dispenser	Black	1
118671717	No Touch Dispenser	Gray	1
118671718	No Touch Dispenser	White	1



HandWorks® Foaming E2 Sanitizing Hand Soap

- Fast-acting foaming hand soap cleans and sanitizes at the same time
- 0.13% Benzalkonium Chloride – kills 99.99% of common germs within 15 seconds
- No added dye or fragrance
- Complies with E2 chlorine equivalency tests
- Ideal for use in all food-related facilities including food processing, food preparation and food service industries
- Must be rinsed off after use



PART #	DESCRIPTION	QTY.
118671947	1000ml (33.8 oz.) Refill Bag	6

HandWorks® Foaming Antibacterial Moisturizing Hand Soap

- Superior rich, thick foam
- Made with 0.13% Benzalkonium Chloride
- Emollients help soothe and maintain skin's natural moisture
- Contains Aloe Vera, Vitamin E and Amino Acids to help nourish the skin
- Pink color with sophisticated grapefruit fragrance



PART #	DESCRIPTION	QTY.
118671948	1000ml (33.8 oz.) Refill Bag	6

Aero-Chem® Dishwashing Concentrate with Aloe Vera

Formulated for manual dish, pot, and pan washing. Quickly removes grease, baked-on food, and food stains from utensils, flatware, glasses, pots, and pans. High soil load capacity specially developed for hotels, restaurants, schools, and institutions.

- Lemon Fragrance
- Cut grease & oils
- Flip top cap
- Non-streaking
- Biodegradable

PART #	DESCRIPTION	SCENT	QTY.
119007615	Flip-cap bottle, 38 oz. (1.12 L)	Lemon	8
119007616	Gallon (3.78 L)	Lemon	1
119007617	Gallon (3.78 L)	Lemon	4
119007618	5-Gallon Pail (18.9 L)	Lemon	1



Flip top cap designed with a foil seal, simply pop it open and squeeze.

CLEANERS

Aero-Chem® Glass Cleaner

- 18 oz. net wt. (510 g)

PART #	LEGACY #	QTY.
106261922	PA82850	1
116756628	PA82850-12	12



Aero-Chem® Beeswax Furniture Polish

- 17 oz. net wt. (482 g)
- Cleans and polishes
- Lemon fragrance

PART #	QTY.
119472221	1
119472222	12



Aero-Chem® Chalkboard & Whiteboard Cleaner

- 19 oz. net wt. (539 g)
- Cleans and maintains chalkboards & whiteboards
- Eliminates glare

PART #	QTY.
119472223	1
119472224	12



Aero-Chem® Eye Opener Citrus Cleaner

- 18 oz. net wt. (510 g)

PART #	LEGACY #	QTY.
116682085	404068	1
116682088	404068-12	12



⚠️ WARNING: This product can expose you to chemicals including [Ethylene Glycol, 1,4-Dioxane and Ethylene Oxide], which is [are] known to the State of California to cause birth defects or other reproductive harm. For more information go to www.P65Warnings.ca.gov.

Aero-Chem® Stainless Steel Cleaner

- 18 oz. net wt. (510 g)

PART #	LEGACY #	QTY.
116679419	402288	1
116679423	402288-12	12



Aero-Chem® Foaming Citrus Degreaser

- 17 oz. net wt. (482 g)

PART #	LEGACY #	QTY.
106269450	PA86003	1
116758098	PA86003-6	6
116758088	PA86003-12	12
116758091	PA86003-24	24



Aero-Chem® Solvent Degreaser

- 14 oz. net wt. (397 g)
- This product should not be used on plastic, rubber, polycarbonates or similar surfaces

PART #	QTY.
118646135	1
116683038	12



⚠️ WARNING: product can expose you to chemicals including [Toluene], which is [are] known to the State of California to cause cancer and birth defects or other reproductive harm. For more information go to www.P65Warnings.ca.gov.

CLEANERS (continued)

Aero-Chem® Safety Solvent Degreaser

- 18 oz. net wt. (510 g)
- Not for sale in CA, CT, DE, DC, IL, MD, ME, MI, NJ, NY, RI, UT

PART #	LEGACY #	QTY.
116526543	4008505	1
116677531	4008505-6	6
111235863	4008505-12	12
111786240	4008505-24	24



Aero-Chem® Citrus Label Remover

- 15 oz. net wt. (425 g)

PART #	LEGACY #	QTY.
106299977	PA88455	1
116759512	PA88455-12	12



Aero-Chem® Graffiti Remover

- 13 oz. net wt. (369 g)

PART #	QTY.
119472196	1
119472197	12



Aero-Chem® Non-Flammable Electric Contact Cleaner

- 14 oz. net wt. (397 g)

PART #	LEGACY #	QTY.
106283647	PA89356	1
116759994	PA89356-12	12

⚠ WARNING: This product can expose you to chemicals including [1-Bromopropane], which is [are] known to the State of California to cause cancer and birth defects or other reproductive harm. For more information go to www.P65Warnings.ca.gov.



Aero-Chem® Precision Contact Cleaner

- 13.5 oz. net wt. (383 g)

PART #	LEGACY #	QTY.
106278527	PA88272	1
116759363	PA88272-12	12

⚠ WARNING: This product can expose you to chemicals including [Benzene], which is [are] known to the State of California to cause cancer and birth defects or other reproductive harm. For more information go to www.P65Warnings.ca.gov.



Aero-Chem® Contact Cleaner (50 State VOC Compliant)

- 13.5 oz. net wt. (383 g)
- Fast evaporation
- Ozone safe
- Dielectric to 25,000 volts
- Residue free
- No CFC's or HCFC's

PART #	QTY.
119472219	1
119472220	12



BeeScential High Performance Cleaner

- A special high performance cleaner designed to repel bees and many other insects.
- This excellent general-purpose cleaner powerfully cleans most surfaces while leaving behind our specifically formulated blend of all natural essential oils that have been proven to deter bees, flies, spiders and many other insects.
- Just simply spray the cleaner on the surface and wipe with cloth or paper towel.
- Excellent for underneath decks, overhangs, outdoor tables, bars and other areas that attract insects.
- Excellent for use on grills, lawn furniture, outdoor tables, underneath decks, overhangs, golf courses, amusement parks, boats, trailers, trash & waste receptacles, bathrooms and more...

PART #	DESCRIPTION	QTY.
118646103	32 oz. Qt. (946ml)	1
118646104	32 oz. Qt. (946ml)	12

Quarts include three trigger sprayers per case

PART #	DESCRIPTION	QTY.
118646106	Gallon (3.8L)	1
118646107	Gallon (3.8L)	4
118646108	5-Gallon (19L)	1
118646109*	30-Gallon Drum (114L)	1
118646110*	55-Gallon Drum (208L)	1
118646162*	250-Gallon Tote (946L)	1

*Drums and tote will be drop shipped from supplier



All Natural



Not a Pesticide



Will Not Harm Insects



Honey Bee Safe



COATINGS, PROTECTANTS & SEALANTS

Aero-Chem® Heavy Duty Belt Dressing

- 14.75 oz. net wt. (418 g)
- Reduce the slipping of fabric belts, conveyor belts, leather and rubber belts found in automobiles and manufacturing equipment
- Areas of use also include construction areas, industrial plants and factories

PART #	LEGACY #	QTY.
106278829	PA82860	1
116756670	PA82860-12	12



Power-Grip™ Multi-Purpose Sealant Black

- 15 oz. net wt. (425 g)

PART #	LEGACY #	QTY.
116682950	404438	1
116682952	404438-12	12

⚠ WARNING: This product can expose you to chemicals including [Carbon Black, Toluene], which is [are] known to the State of California to cause cancer and birth defects or other reproductive harm. For more information go to www.P65Warnings.ca.gov.



Aero-Chem® Brute Blast®

• 11 oz. net wt. (312 g)

PART #	LEGACY #	QTY.
106522909	PA82884	1
116756695	PA82884-12	12
116756700	PA82884-24	24

⚠ WARNING: This product can expose you to chemicals including [Naphthalene, Toluene], which is [are] known to the State of California to cause cancer or birth defects or other reproductive harm. For more information go to www.P65Warnings.ca.gov.



Aero-Chem® Brute Magic™ Oil Lubricant

• 18 oz. net wt. (510 g)
• Not for sale in CA

PART #	LEGACY #	QTY.
110357097	PA85078	1
116757609	PA85078-6	6
116757604	PA85078-12	12
110357099	PA85078-24	24



Aero-Chem® Brute Magic™ Oil Cherry Lubricant

• 10 oz. net wt. (283 g)
• Not for sale in CA

PART #	LEGACY #	QTY.
114551058	404398	1
116682796	404398-6	6
116682789	404398-12	12
116682792	404398-24	24



Aero-Chem® Brute Magic™ Oil III Orange Lubricant

• 10 oz. net wt. (283 g)

PART #	QTY.
118889017	1
118889018	12



Aero-Chem® Ultra Clear Lube

• 13 oz. net wt. (369 g)

PART #	LEGACY #	QTY.
113383849	4008545	1
116677559	4008545-6	6
116677552	4008545-12	12
116677556	4008545-24	24



Aero-Chem® Inner Slide Lube

• 10.5 oz. net wt. (298 g)

PART #	QTY.
117192778	1
117192779	12



Aero-Chem® Force CB™ Penetrating Lubricant

• 18 oz. net wt. (510 g), banana scented
• Not for sale in CA

PART #	LEGACY #	QTY.
116692554	407939	1
116692557	407939-12	12
116692562	407939-24	24



Aero-Chem® Heavy Duty Penetrating Oil

• 15 oz. net wt. (425 g)

PART #	LEGACY #	QTY.
106288677	PA82853	1
110357040	PA82853-12	12



Aero-Chem® PTFE Gel

• 13 oz. net wt. (368 g)
• Contains PTFE
• Not for sale in CA

PART #	LEGACY #	QTY.
106273082	PA86208	1
116758342	PA86208-12	12
116758346	PA86208-24	24



Aero-Chem® PTFE Dry Lube

• 10 oz. net wt. (283 g)
• Contains PTFE particles

PART #	QTY.
118646141	1
118646142	12



⚠ WARNING: This product can expose you to chemicals including [Hexane, Toluene], which is [are] known to the State of California to cause cancer and birth defects or other reproductive harm. For more information go to www.P65Warnings.ca.gov.

Aero-Chem® Dry Moly Lube

• 12 oz. net wt (340 g)
• Contains molybdenum disulfide

PART #	LEGACY #	QTY.
106279835	PA89396	1
116760031	PA89396-12	12



⚠ WARNING: This product can expose you to chemicals including [Dichloromethane], which is [are] known to the State of California to cause cancer and birth defects or other reproductive harm. For more information go to www.P65Warnings.ca.gov.

Aero-Chem® TG10 Industrial Lubricant

• 15 oz. net wt. (425 g)
• Contains PTFE and graphite
• Not for sale in CA

PART #	LEGACY #	QTY.
106277642	PA86147	1
110742820	PA86147-6	6
116758286	PA86147-12	12
116758291	PA86147-24	24



Aero-Chem® Dry Graphite Lubricant

• 14 oz. net wt. (397 g)
• Provides even dispersion of graphite

PART #	LEGACY #	QTY.
106275030	PA85743	1
116757890	PA85743-12	12



⚠ WARNING: This product can expose you to chemicals including [Toluene], which is [are] known to the State of California to cause cancer and birth defects or other reproductive harm. For more information go to www.P65Warnings.ca.gov.

Aero-Chem® Industrial Rust & Corrosion Prevention Protectant & Lubricant

• 12 oz. net wt. (340 g)

PART #	QTY.
117192776	1
117192777	12



Aero-Chem® Heavy Duty Chain & Cable Lube

• 16 oz. net wt. (454 g)

PART #	LEGACY #	QTY.
106267155	PA82855	1
116756648	PA82855-12	12



Aero-Chem® Heavy Duty Open Gear Lube

• 12 oz. net wt. (340 g)

PART #	LEGACY #	QTY.
106247538	PA88525	1
112101223	PA88525-12	12



Aero-Chem® Heavy Duty Industrial Anti-Seize

• 12 oz. net wt. (340 g)

PART #	LEGACY #	QTY.
106293490	PA87139	1
116758810	PA87139-12	12

⚠️ WARNING: This product can expose you to chemicals including [Toluene], which is [are] known to the State of California to cause cancer and birth defects or other reproductive harm. For more information go to www.P65Warnings.ca.gov.



Aero-Chem® Copper Anti-Seize

• 12 oz. net wt. (340 g)

PART #	LEGACY #	QTY.
106290926	PA85186	1
116757640	PA85186-12	12



Aero-Chem® Heavy Duty White Lithium Grease

• 12 oz. net wt. (340 g)

PART #	LEGACY #	QTY.
106513004	PA82874	1
116756675	PA82874-12	12



Aero-Chem® Heavy Load Red Aluminum Grease

• 11.5 oz. net wt. (326 g)

PART #	LEGACY #	QTY.
110616169	PA82880	1
110357052	PA82880-12	12



Aero-Chem® Food Grade White Grease

• 10 oz. net wt. (283 g)

PART #	LEGACY #	QTY.
116682936	404433	1
116682939	404433-12	12

⚠️ WARNING: This product can expose you to chemicals including [n-Hexane], which is [are] known to the State of California to cause birth defects or other reproductive harm. For more information go to www.P65Warnings.ca.gov.



Aero-Chem® Heavy Duty Cutting Oil

• 12.75 oz. net wt. (362 g)

PART #	LEGACY #	QTY.
106522361	PA82857	1
116756660	PA82857-6	6
116756654	PA82857-12	12
113807717	PA82857-24	24



Aero-Chem® Cutting Tool Coolant

• 16 oz. net wt. (454 g)

PART #	QTY.
118646133	1
118646134	12



Aero-Chem® Light Oil Lube

• 12 oz. net wt. (340 g)

PART #	LEGACY #	QTY.
106298359	PA88676	1
110357438	PA88676-12	12



MARKETS SERVED:



Construction



Government



Manufacturing



Natural Resources



Transportation



Food Processing

Fleet-Fill® Transmission Assembly Lube

- Specially formulated to provide lubrication during transmission assembly process
- Designed to dissolve or wash away harmlessly once the transmission fluid reaches operating temperature
- Dyed blue to prevent misdiagnosing a fluid leak after assembly
- Provides firm or light tack as the assembly require

Applications: Use Fleet-Fill® Transmission Assembly Lube to lubricate differentials and transmissions that specify an extreme pressure lubricant including over-the-road, stop-and-go fleets, off-highway equipment, heavily loaded industrial gearboxes, worm gearboxes and machine tools.

PART #	DESCRIPTION	COLOR	QTY.
120227634	16 oz. net wt. (454 g)	Blue	1
120227635	16 oz. net wt. (454 g)	Blue	6



FLEET-Fill® Heavy Duty Carburetor & Choke Cleaner

- 15 oz. net wt. (425 g)

PART #	LEGACY #	QTY.
106257050	PA85924	1
116758007	PA85924-12	12



FLEET-Fill® Carb & Choke Cleaner

- 13 oz. net wt. (369 g), with dual actuator tip

PART #	QTY.
117490725	1
117490726	12



FLEET-Fill® Heavy Duty Battery Cleaner With Acid Indicator

- 18 oz. net wt. (510 g)

PART #	LEGACY #	QTY.
106288205	PA82851	1
116756643	PA82851-12	12



FLEET-Fill® Battery Protector

- 11.75 oz. net wt. (333 g)

PART #	LEGACY #	QTY.
106288886	PA85922	1
116758002	PA85922-12	12

WARNING: This product can expose you to chemicals including [Carbon Black], which is [are] known to the State of California to cause cancer and birth defects or other reproductive harm. For more information go to www.P65Warnings.ca.gov.



FLEET-Fill® Battery Protector Red Gel

- 12 oz. net wt. (340 g)

PART #	LEGACY #	QTY.
106296078	PA88514	1
116759552	PA88514-12	12



FLEET-Fill® Engine Degreaser

- 16 oz. net wt. (454 g)

PART #	QTY.
118646139	1
118646140	12



FLEET-Fill® Tire Shine

- 12 oz. net wt. (340 g)

PART #	LEGACY #	QTY.
116683732	404742	1
116683734	404742-12	12



FLEET-Fill® Carpet & Upholstery Cleaner

- 18 oz. net wt. (510 g)

PART #	LEGACY #	QTY.
116683725	404741	1
116683730	404741-12	12



FLEET-Fill® Vinyl & Leather Cleaner

- 14 oz. net wt. (397 g)

PART #	QTY.
118646137	1
118646138	12

WARNING: This product can expose you to chemicals including [Benzene, 1, 2-Dimethoxy-4], which is [are] known to the State of California to cause cancer and birth defects or other reproductive harm. For more information go to www.P65Warnings.ca.gov.



FLEET-Fill® Multi-Purpose Cleaner & Degreaser

- 13 oz. net wt. (369 g), with dual actuator tip
- Not for sale in CA, UT

PART #	QTY.
117490729	1
117490730	12



FLEET-Fill® Paint Remover

- 11 oz. net wt. (312 g)

PART #	LEGACY #	QTY.
106287085	PA87495	1
110357339	PA87495-12	12



FLEET-Fill® Tar & Asphalt Remover

- 12 oz. net wt. (340 g)
- Non chlorinated solvents
- Biodegradable
- Cuts through tar & asphalt

PART #	QTY.
119472225	1
119472227	12



FLEET-Fill® Silicone Lube

- 13 oz. net wt. (369 g), with dual actuator tip

PART #	QTY.
117490723	1
117490724	12



FLEET-Fill® 5-Way Corrosion Inhibitor

- 13 oz. net wt. (369 g), with dual actuator tip

PART #	QTY.
117490727	1
117490728	12



Aero-Chem® Rubberized Undercoating

- 11 oz. net wt. (312 g)

PART #	LEGACY #	QTY.
106294682	PA82883	1
116756690	PA82883-12	12

WARNING: This product can expose you to chemicals including [Toluene], which is [are] known to the State of California to cause cancer and birth defects or other reproductive harm. For more information go to www.P65Warnings.ca.gov.



Aero-Chem® Red Insulating Varnish

- 16 oz. net wt. (454 g)

PART #	LEGACY #	QTY.
106265610	PA82854	1
110357041	PA82854-12	12

WARNING: This product can expose you to chemicals including [Toluene], which is [are] known to the State of California to cause cancer and birth defects or other reproductive harm. For more information go to www.P65Warnings.ca.gov.



FLEET-Fill® Truck Bed Coating, Black

- 15 oz. net wt. (425 g)

PART #	LEGACY #	QTY.
116683720	404740	1
116683724	404740-12	12

WARNING: This product can expose you to chemicals including [Carbon Black - PBK6], which is [are] known to the State of California to cause cancer. For more information go to www.P65Warnings.ca.gov.



FLEET-Fill® Extreme Degreaser Concentrate

- A high alkaline degreaser concentrate
- Even at full strength safe to use on painted surfaces, tires and polished aluminum
- Dilute with water for your specific cleaning task
- Don't allow to dry; rinse at high PSI
- Use 1 part degreaser to 4 parts water ratio (1:4) to clean greasy engines, heavy equipment and machinery

PART #	DESCRIPTION	QTY.
118646112	5-Gallon (19L)	1
118646113	55-Gallon Drum* (208L)	1



FLEET-Fill® Asphalt Remover & Degreaser

- Safely remove hardened asphalt, tar, ink, caulk, adhesives and grease without using harsh chemicals such as diesel fuel, turpentine or gasoline
- Made from environmentally safe D-limonene, known for its cleaning ability and pleasant citrus scent
- Will not harm non-porous surfaces, painted vehicle surfaces or tires
- Non-flammable, non-hazardous and contains no VOC's

PART #	DESCRIPTION	QTY.
118646115	5-Gallon (19L)	1
118646116	55-Gallon Drum* (208L)	1



FLEET-Fill® Polished Metal Cleaner

- Excellent cleaner for aluminum and other polished metals
- Effective wheel cleaner and brake dust remover
- Use as a pre-soak before using Fleet-Fill® Soak Wash

PART #	DESCRIPTION	QTY.
118646117	5-Gallon (19L)	1
118646118	55-Gallon Drum* (208L)	1



FLEET-Fill® Concrete Cleaner & Dissolver

- Remove and safely dissolve concrete, mortar, cement and other cement-based products from your vehicles, tools, machinery and other work surfaces
- Biodegradable and contains a metal-protecting rust inhibitor
- Removes rust and oxidation
- Not for use on polished aluminum or glass

PART #	DESCRIPTION	QTY.
118646119	5-Gallon (19L)	1
118646120	55-Gallon Drum* (208L)	1



FLEET-Fill® Soak Step 1 Wash

- Fleet-Fill® Soak Universal Touchless Wash has a combination of surfactants that will tackle and remove dirt and grime

PART #	DESCRIPTION	QTY.
118646121	5-Gallon (19L)	1
118646122	55-Gallon Drum* (208L)	1



FLEET-Fill® Shine Step 2 Neutralizer

- A simple dual stage process that breaks down dirt and road film from the surface, allowing the high PSI rinse to remove more grime than any single application
- The dual application will save up to 80% of time when compared to a standard mitt wash

PART #	DESCRIPTION	QTY.
118646123	5-Gallon (19L)	1
118646124	55-Gallon Drum* (208L)	1



FLEET-Fill® Glass & Window Cleaner

- Streak free and ammonia free
- Safe on tint and acrylic
- Removes bugs, grime, road film and smoke residue

PART #	DESCRIPTION	QTY.
118646125	5-Gallon (19L)	1
118646126	55-Gallon Drum* (208L)	1



FLEET-Fill® Garage & Warehouse Floor Cleaner

- This concentrated, low-foaming garage and warehouse floor cleaner cleans deep and prevents redepositing of dirt and grime
- Can be applied by mop or with a floor cleaning machine
- Add more water to weaken the solution or less to strengthen it

PART #	DESCRIPTION	QTY.
118646128	5-Gallon (19L)	1
118646129	55-Gallon Drum* (208L)	1



* 55-gallon drums will be drop shipped



Tire Sidewall Brush

- Block will not crack if left in cleaning solution



PART #	LEGACY #	BLOCK SIZE	ROWS	HANDLE	MATERIAL	QTY.
102700901	67306	8-1/2" X 5/8"	8 X 7	Plastic	Brass	1

10" Bi-Level Scrub Brush

- Foam block
- Bi-level design allows the brush to stay in contact with the surface at various working angles
- Can be used with handle #102760984



PART #	LEGACY #	DESCRIPTION	QTY.
102701726	67303	10" Flagged White Polystyrene	1

Truck Wash Brush

- Foam block with two handle holes
- Protective bumper
- Use with threaded handle #102760984



PART #	LEGACY #	DESCRIPTION	QTY.
111503978	PA18280	9-1/2" x 2-3/4" Block, Flagged Green Polystyrene	1

60" Hardwood Handle

- Quality hardwood
- Heavy-duty threaded metal tip provides additional strength
- Handle fits part #102701726 and #111503978



PART #	LEGACY #	DESCRIPTION	QTY.
102760984	10965	15/16" dia.	1

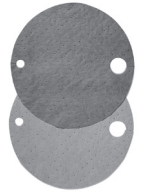
DID YOU KNOW:

Improper tire cleaning can lead to uneven wear and tear, reducing tire lifespan and compromising road safety. Specific cleaning solutions and pressure adjustments are crucial for different tires types. Additionally, it's important to clean tires routinely, as build up can reduce traction and increase the risk of an accident.



Drum Top Absorbent Pads

- Gray polypropylene
- Absorb drips from leaking pumps to help keep drum storage areas looking good
- Precut bung holes make for easy access to drum
- Pads can be removed and replaced with pumps and valves installed
- Grunge-hiding gray signifies universal absorbency for oils, coolants, solvents and water



PART #	LEGACY #	COLOR	TYPE	QTY.
116700449	70070	Gray	Universal	1

Plastic Drum Pump

- Includes 3/4" IPS, 2" IPS and pail adaptor
- Pump fits 5, 15, 30 and 55 gallon drums
- Utilizes an innovative threaded, two piece telescopic intake tube that eliminates the need for clips or connectors with no cutting of tubes to fit
- Includes restrictor clip to set output per stroke
- Compatible with most water based solutions
- Not for use with corrosive chemicals or viscous products



PART #	MAX OUTPUT	MATERIAL	ADAPTER	QTY.
119588237	16 oz. (473 ml)	Polyethylene/ Polypropylene	3/4" of 2" IPS (Iron Pipe Thread)	1

B100 Metal Drum Pump

- Ideal for thicker liquids
- Fits standard 15, 30, and 55 gallon drums
- Large, 22 oz. output per stroke significantly reduces the number of times you pump
- Will pump most solvent solutions, water based products and thicker liquids such as motor oil
- Do not use with corrosive chemicals



PART #	MAX OUTPUT	MATERIAL	ADAPTER	QTY.
119588238	22 oz. (651 ml)	Zinc Plated Steel	2" IPS (Iron Pipe Thread)	1

B300 Metal Drum Pump

- Lever style is easier to use than piston style pumps
- Fits standard 15, 30, and 55 gallon drums
- Oils, lubricants, non-corrosive chemicals



PART #	MAX OUTPUT	MATERIAL	ADAPTER	QTY.
119588239	12 oz. (355 ml)	Zinc/Aluminum	2" IPS (Iron Pipe Thread)	1





INDUSTRIAL CLEANER • DEGREASER • ABSORBENT

Rhino Dirt™ Industrial Absorbent

Rhino Dirt™ absorbs most industrial oil & chemicals including:

- | | |
|-------------|-----------------------------|
| Acids | Glue |
| ATF | Grease |
| Cooking oil | Hydraulic fluid |
| Coolants | Ink |
| Crude oil | Paint |
| Diesel | Polymers |
| Gasoline | And many more nasty liquids |

- Each 0.5 cu. ft. bag absorbs up to two gallons

PART #	LEGACY #	VOL./BAG	QTY.
116691533	407598	0.5 cu ft.	1
116691536	407598-14	0.5 cu ft.	14
*116691539	407599	0.5 cu ft.	210

- Each 55 gallon drums absorbs up to 36 gallons

PART #	LEGACY #	GAL./DRUM	QTY.
*116691530	407597	55	1

Package Breakdown:

BAGS / CASE	BAGS / PALLET	CASES / PALLET
14	210	15

* Will be drop shipped



Rhino Guard™ Industrial Absorbent Socks

- Each 0.5 cu. ft. bag absorbs up to two gallons
- Ideal for spill containment

PART #	LEGACY #	LENGTH	QTY.
116691524	407596	8 ft. x 4"	1
116691526	407596-6	8 ft. x 4"	6



Weights may vary based on moisture content of product. Rhino Dirt absorption is measured by cubic feet required. Product weights are used to illustrate shipping and disposal cost savings.

FEATURES

- Sucks up spills and leaks instantly
- Leaves surface bone dry
- Sweeps up with a broom - even the broom is dry
- Four pound bag cleans up to two gallons
- Works on all surfaces even dirt and water
- Saves up to 65% on cleanup and disposal costs
- Landfill safe in most states

SEE YOUR LOCAL APPLIED MSSSM ACCOUNT MANAGER FOR DETAILS!



Every Small Part Counts We're here to manage them for you!®

AppliedMSS.com | 800-458-4018

Distribution Centers: Strongsville, OH – Atlanta, GA – Fontana, CA – Agawam, MA

